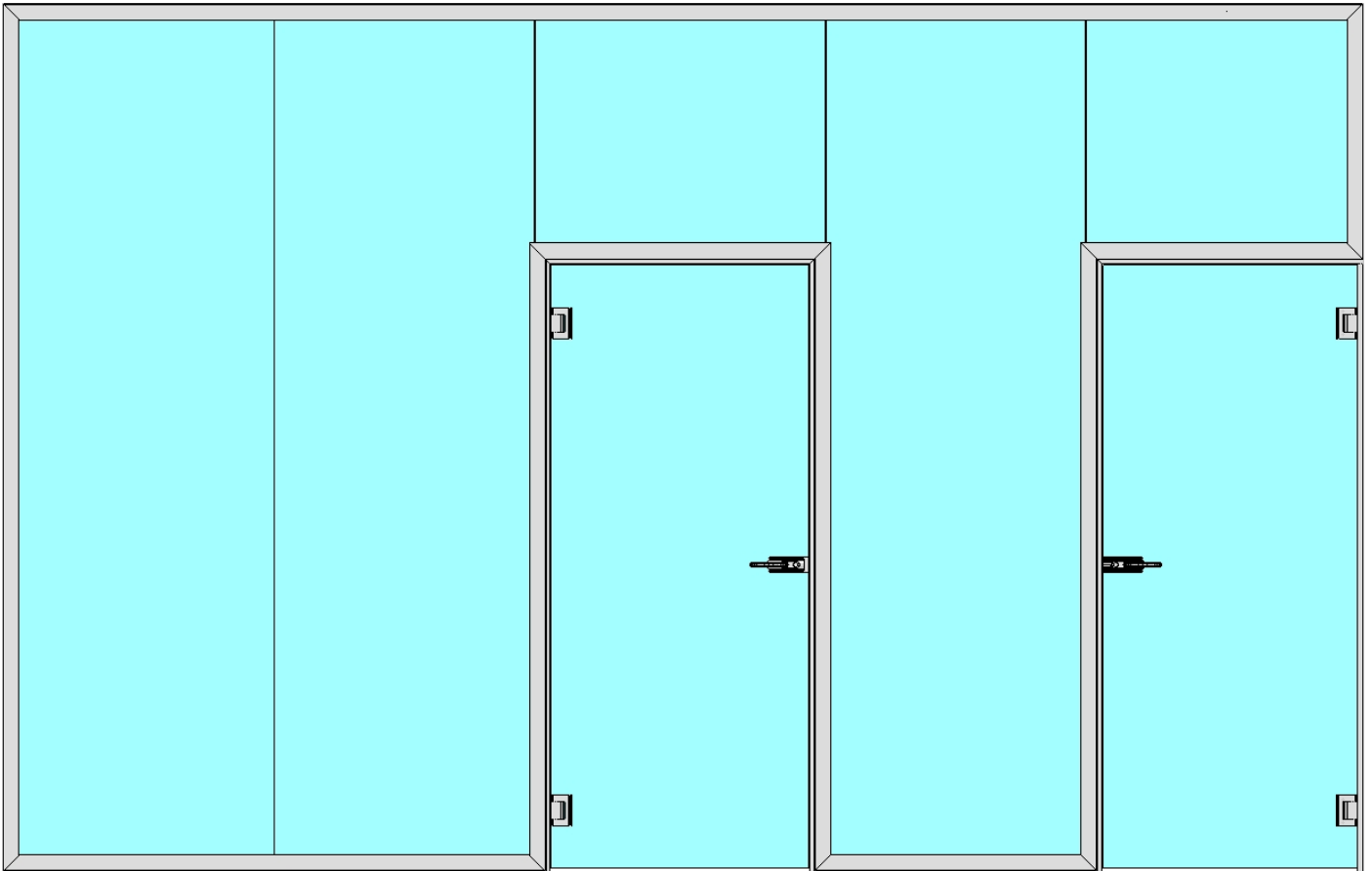


# ESPRO SYSTEM

## ASSEMBLY INSTRUCTIONS CONTINUOUS WALLS



SAMPLE APPLICATION  
WITH CENTRE AND SIDE DOOR

# **- CONTENTS -**

## **1. ASSEMBLY INSTRUCTIONS**

**SHEET 1 – ASSEMBLY INSTRUCTIONS FOR BASIC PROFILE  
AND FIXED PANES (ASSEMBLIES 1 / 2 / 3 / 4 / 5 / 6)**

**SHEET 2 – ASSEMBLY INSTRUCTIONS FOR DOOR FRAMES  
AND FANLIGHTS / TRANSOMS (ASSEMBLIES 7 / 8)**

**SHEET 3 – ASSEMBLY INSTRUCTIONS FOR DOORS  
(8066 / MAX / TRILOBA / 8061 - 8816 - 8826)**

**SHEET 4 – ASSEMBLY INSTRUCTIONS FOR COVER STRIPS**

## **2. DATA SHEETS**

**SHEET 5 – PANE DIMENSIONS**

**SHEET 6 – DIMENSIONS OF DOOR FRAME BASIC PROFILES**

**SHEET 7 – DIMENSIONS OF COVER STRIPS**

**SHEET 8 – 45° AND 90° ANGLES**

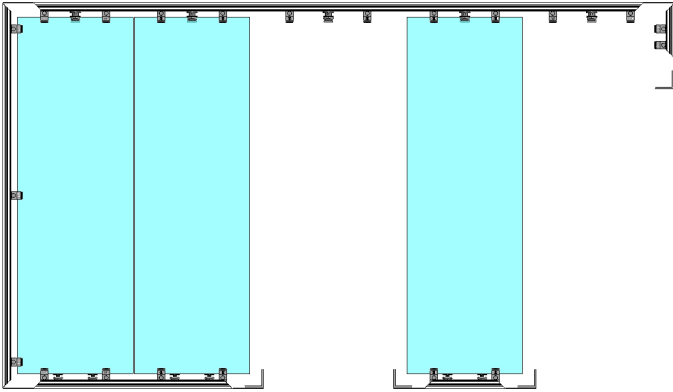
**SHEET 9 – SNAP-ON PROFILES AND REBATE PROFILES**

**SHEET 10 – SWITCH APPLICATIONS**

# ASSEMBLY INSTRUCTIONS

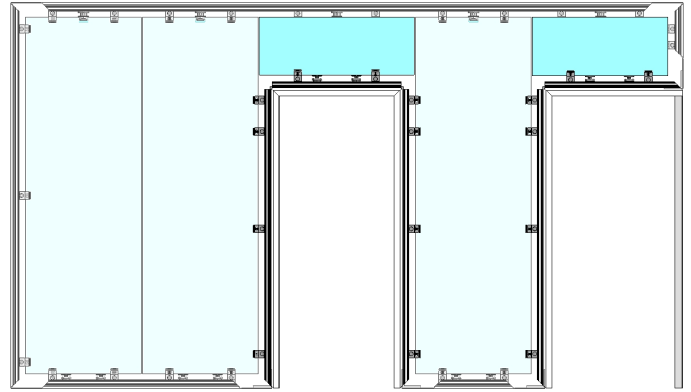
## SHEET 1

ASSEMBLY INSTRUCTIONS FOR BASIC  
PROFILES AND FIXED PANES



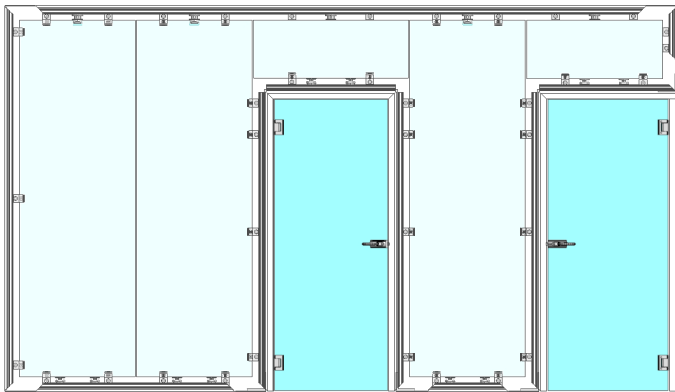
## SHEET 2

ASSEMBLY INSTRUCTIONS FOR DOOR  
FRAMES AND FANLIGHTS / TRANSOMS



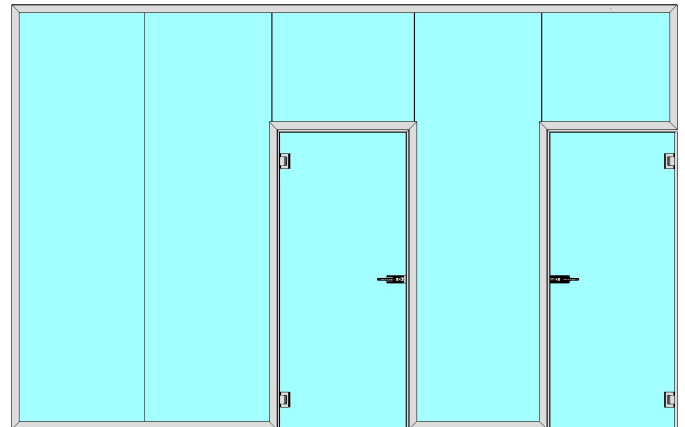
## SHEET 3

ASSEMBLY INSTRUCTIONS FOR DOORS



## SHEET 4

ASSEMBLY INSTRUCTIONS FOR  
COVER STRIPS



## TOOLS AND EQUIPMENT REQUIRED

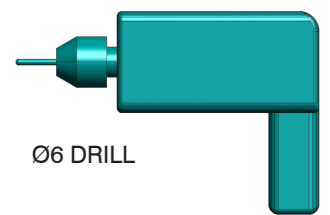
CROSS-HEADED SCREWDRIVER



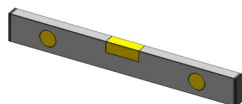
No. 22 SPANNER



Ø4.8 SCREW



Ø6 DRILL



SPIRIT LEVEL



No. 3 ALLEN WRENCH

No. 5 ALLEN WRENCH

Ø6 FISCHER  
PLUG & SCREW



SELF-TAPPING SCREW

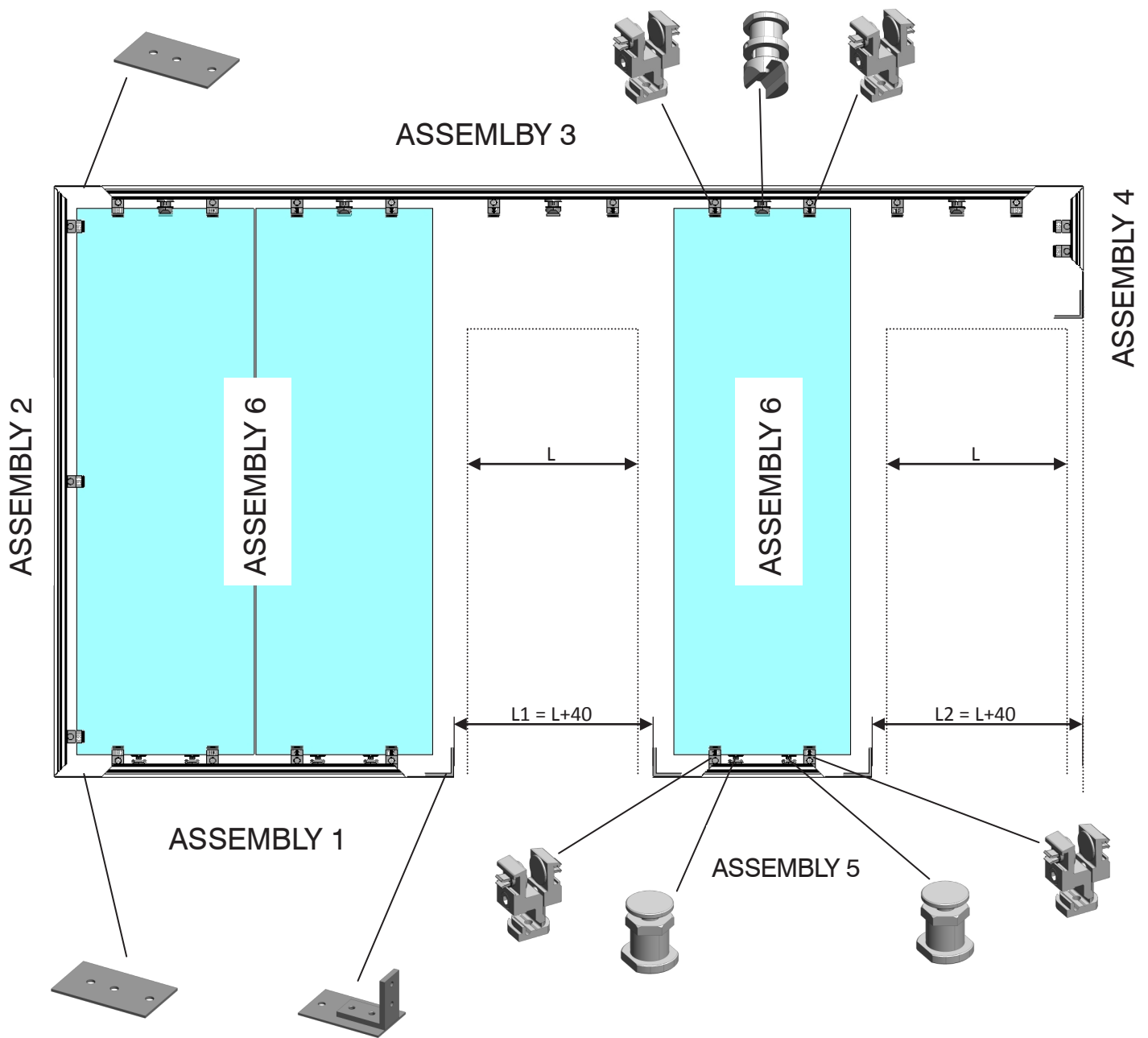


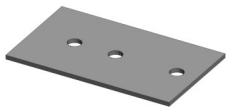
SUCKER

# SHEET 1 - OVERALL DIAGRAM

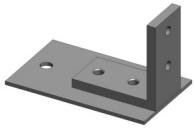
## ASSEMBLY INSTRUCTIONS FOR BASIC PROFILES AND FIXED PANES

OVERALL DIAGRAM OF THE BASIC STRUCTURE WITHOUT COVER STRIPS

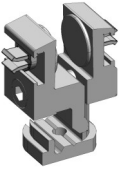




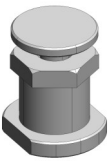
1x



1x



2 (PER PANE)



2 (PER PANE)

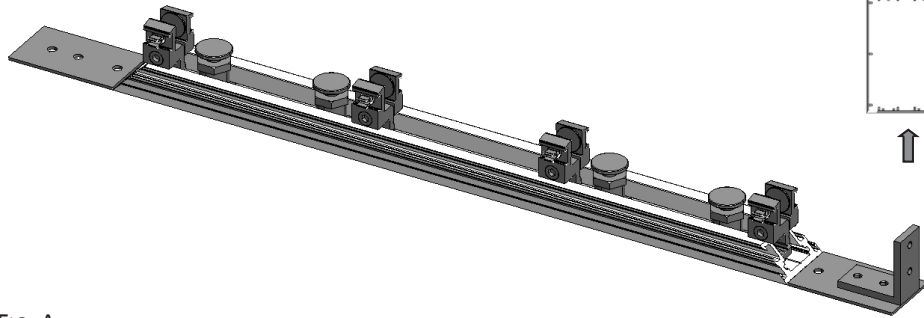
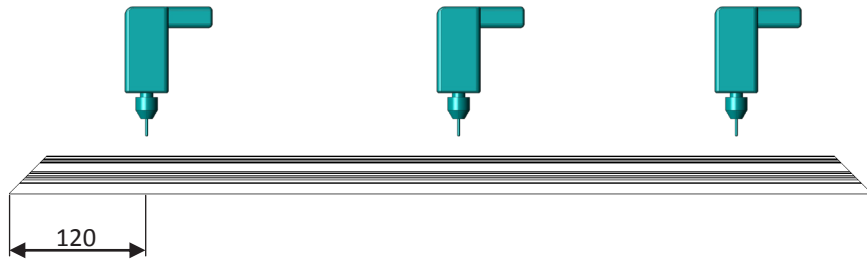
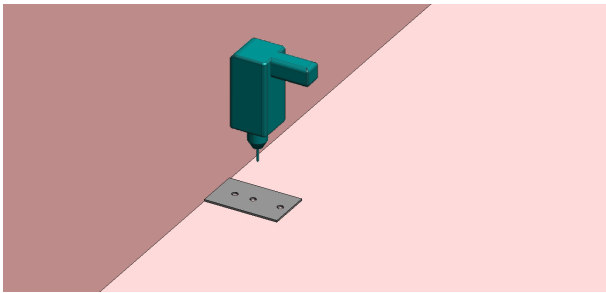


FIG. A

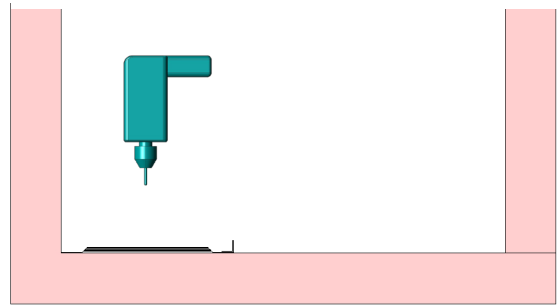
1. PRE-DRILL THE PROFILE (3 HOLES)



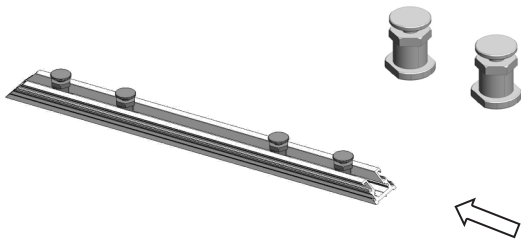
2. FIX THE PLATE AGAINST THE WALL USING THE CENTRE HOLE



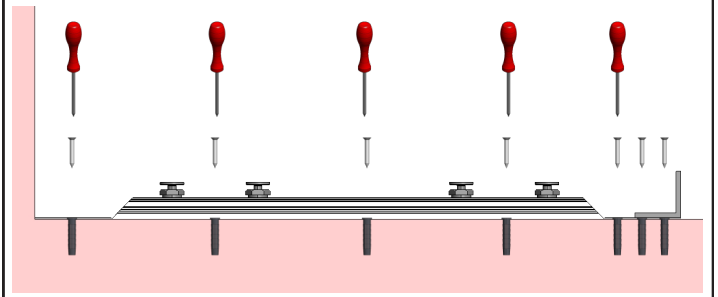
3. POSITION THE PROFILE AND DRILL THE FLOOR



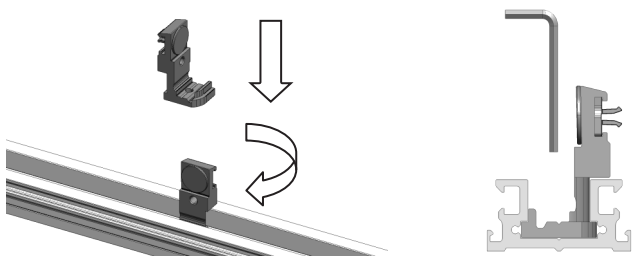
4. SLIDE THE PANE SUPPORTS (2 PER PANE) INTO THE SECTION, AS SHOWN IN FIG. A



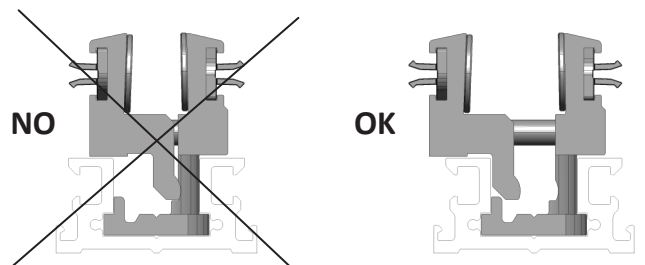
5. FIX THE PROFILE TO THE FLOOR, THEN THE BRACKET

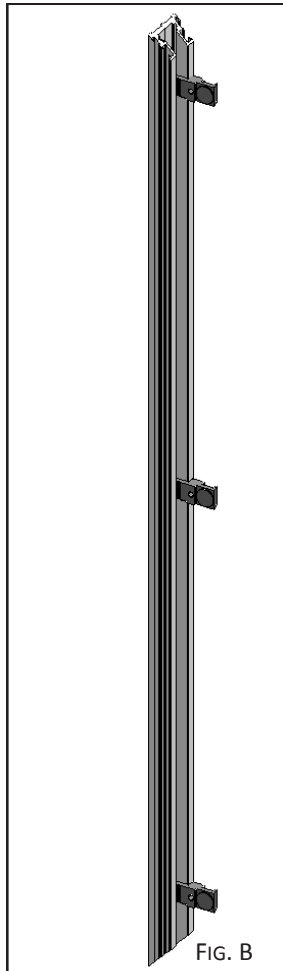
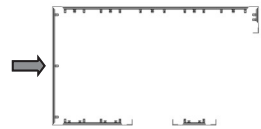
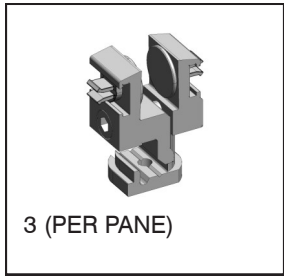


6. INSERT THE CLAMPS WITHOUT THE COVERS (2 PER PANE) AS SHOWN IN FIG. A AND TIGHTEN THE SCREW PARTIALLY TO ALLOW THE CLAMP TO OSCILLATE

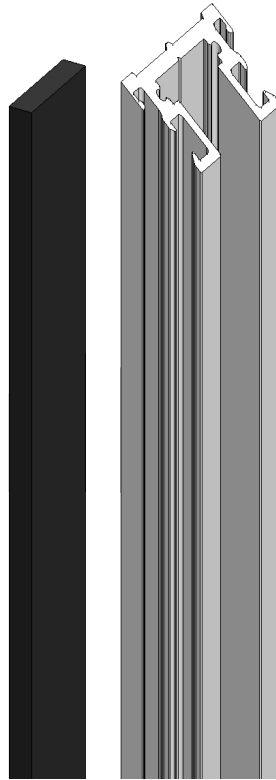


7. MOUNT THE COVERS AND CHECK THEY ARE OPEN

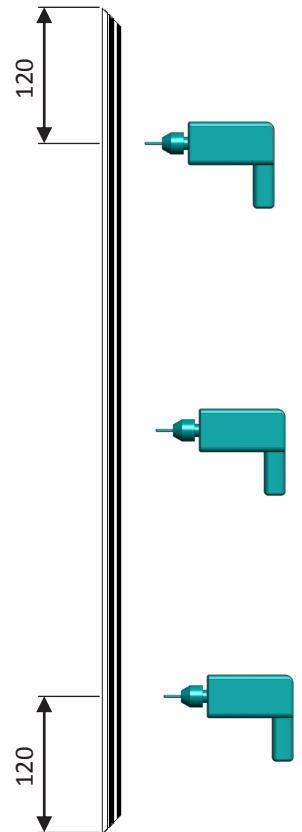




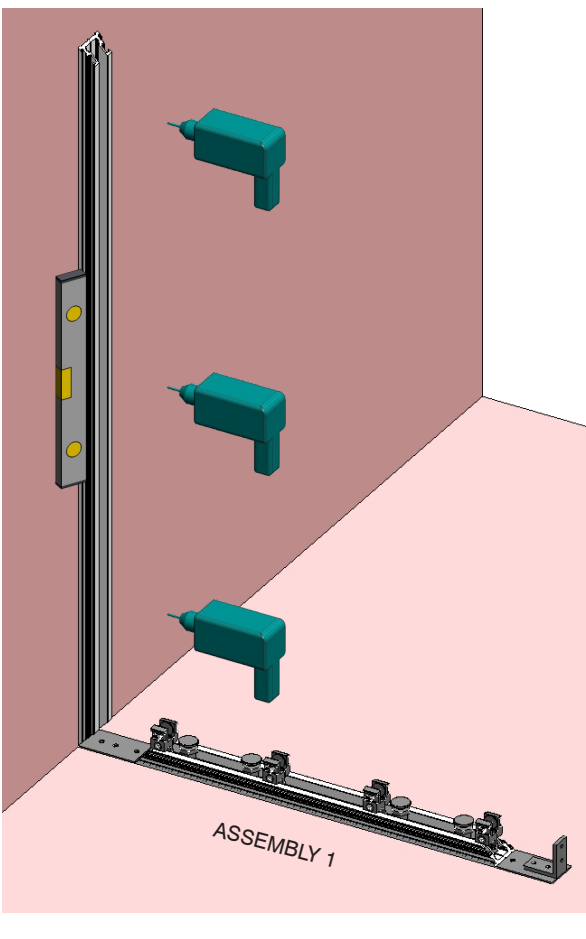
1. APPLY 3M SPONGE



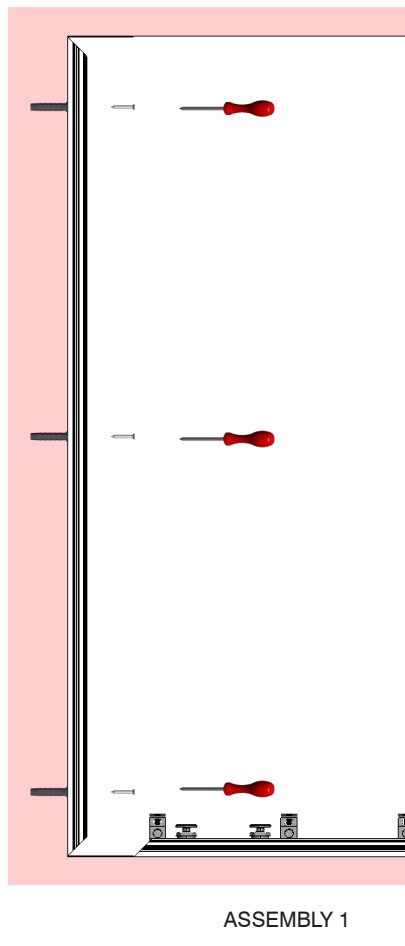
2. PRE-DRILL THE PROFILE (3 HOLES)



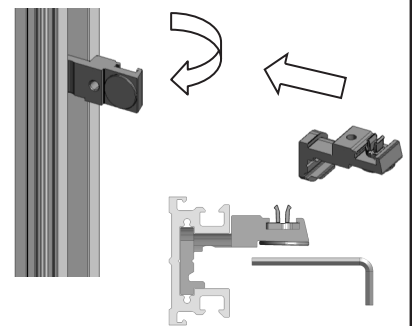
3. CHECK LEVEL AND DRILL THE WALL



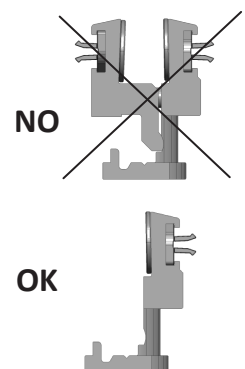
4. FIX THE PROFILE TO THE WALL

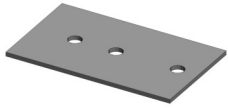


5. INSERT THE CLAMPS (3 PER PANE) AS SHOWN IN FIG. B AND TIGHTEN THE SCREW PARTIALLY TO ALLOW THE CLAMP TO OSCILLATE

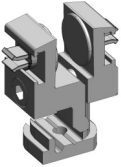


6. DO NOT MOUNT THE CLAMP COVERS

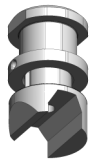




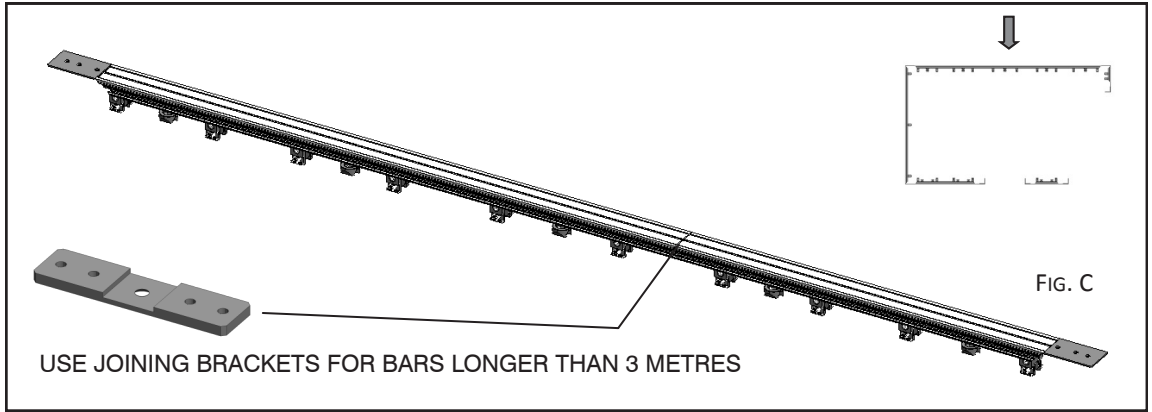
2x



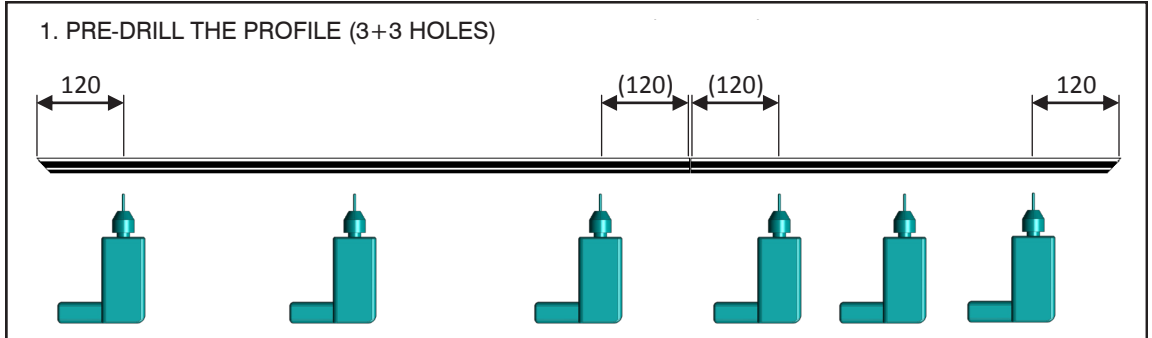
2 (PER PANE)



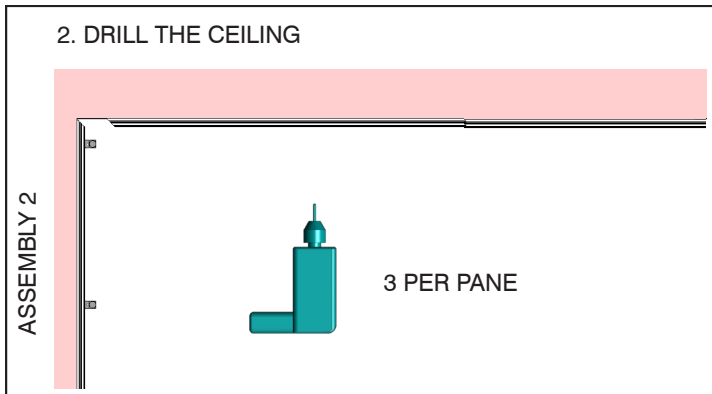
1 (PER PANE)



USE JOINING BRACKETS FOR BARS LONGER THAN 3 METRES

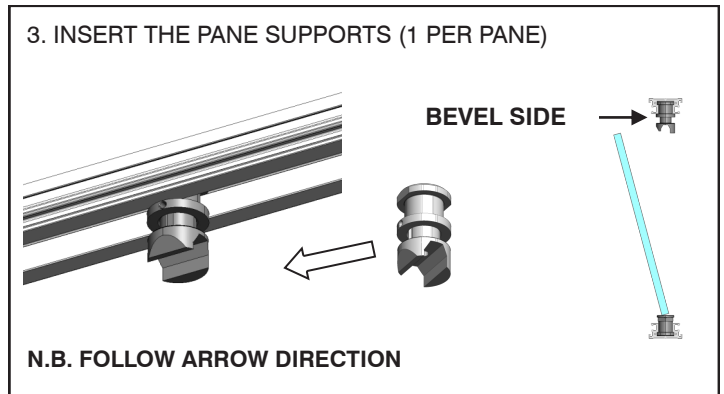


1. PRE-DRILL THE PROFILE (3+3 HOLES)



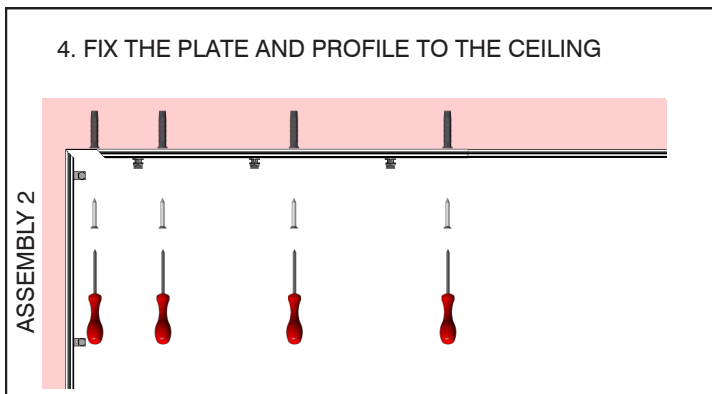
2. DRILL THE CEILING

3 PER PANE

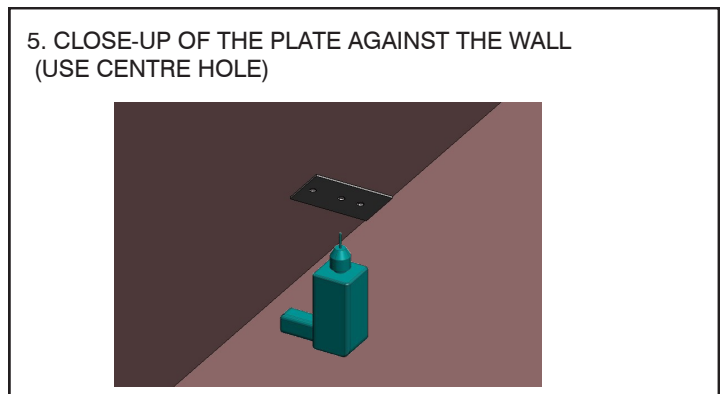


3. INSERT THE PANE SUPPORTS (1 PER PANE)

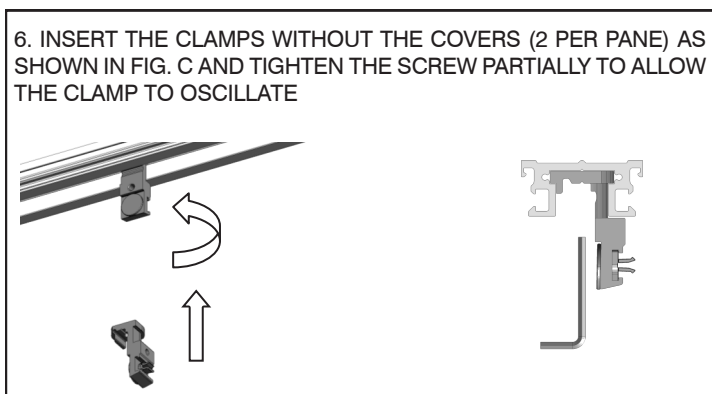
N.B. FOLLOW ARROW DIRECTION



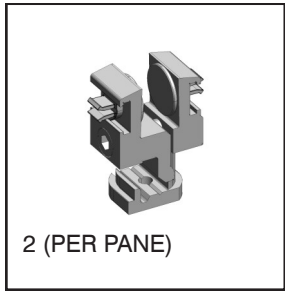
4. FIX THE PLATE AND PROFILE TO THE CEILING



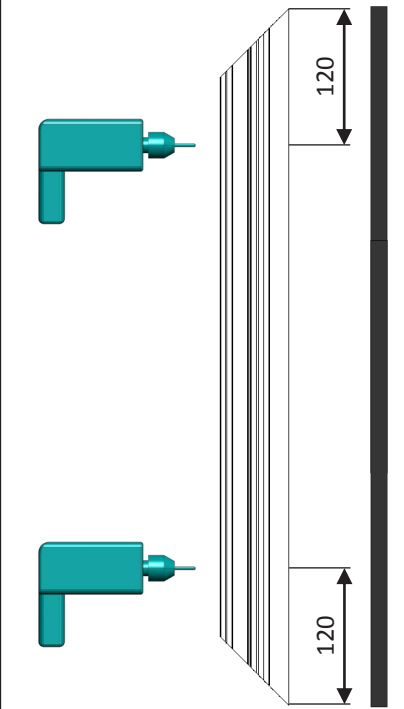
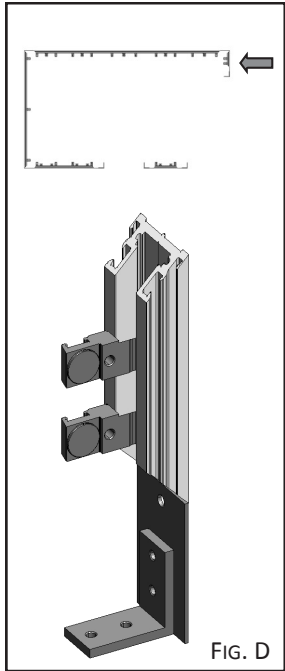
5. CLOSE-UP OF THE PLATE AGAINST THE WALL (USE CENTRE HOLE)



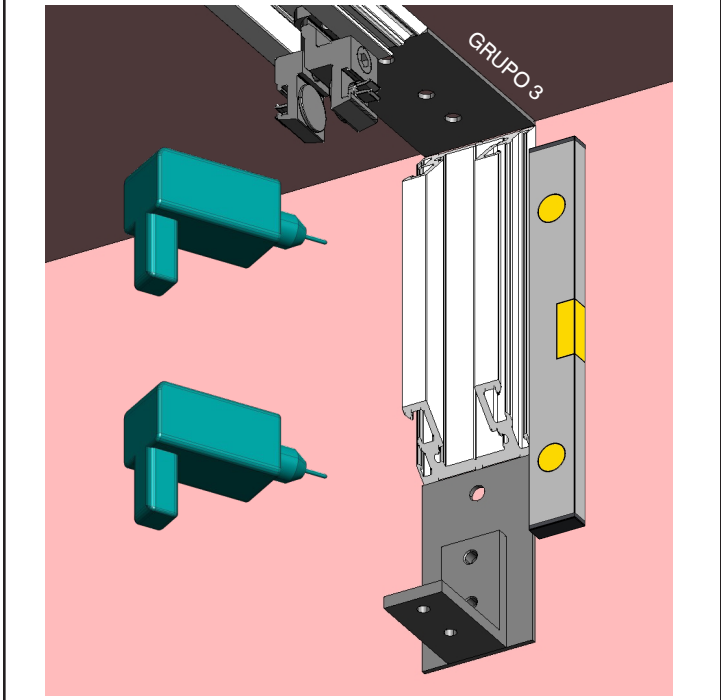
6. INSERT THE CLAMPS WITHOUT THE COVERS (2 PER PANE) AS SHOWN IN FIG. C AND TIGHTEN THE SCREW PARTIALLY TO ALLOW THE CLAMP TO OSCILLATE



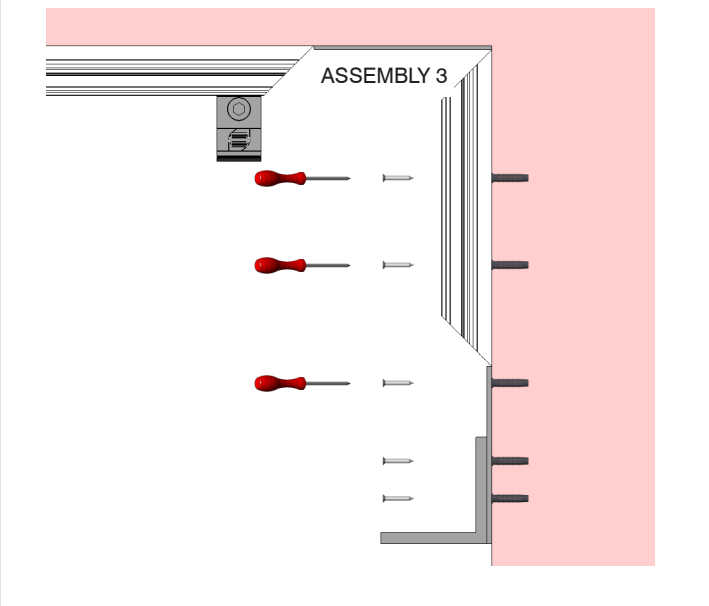
1. APPLY 3M SPONGE AND PRE-DRILL THE PROFILE (2 HOLES)



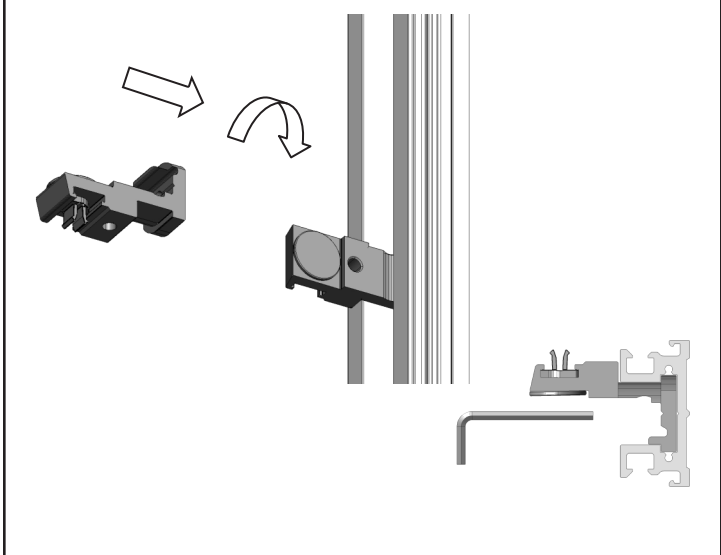
2. CHECK LEVEL AND DRILL THE WALL



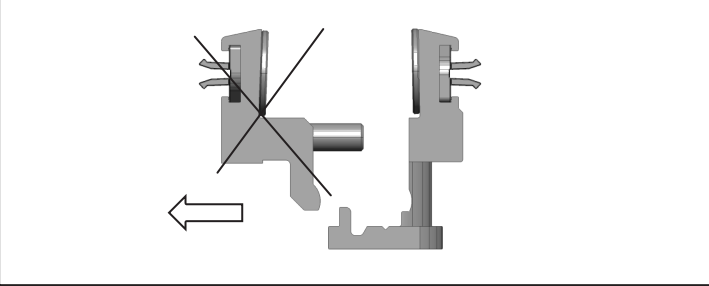
3. FIX THE PROFILE AND BRACKET TO THE WALL



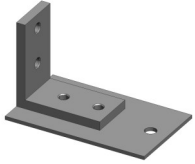
5. INSERT THE CLAMPS WITHOUT THE COVERS (2 PER PANE) AS SHOWN IN FIG. D AND TIGHTEN THE SCREW PARTIALLY TO ALLOW THE CLAMP TO OSCILLATE



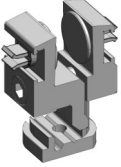
4. DO NOT MOUNT THE CLAMP COVERS



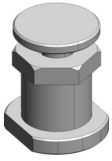




2X



2 (PER PANE)



2 (PER PANE)

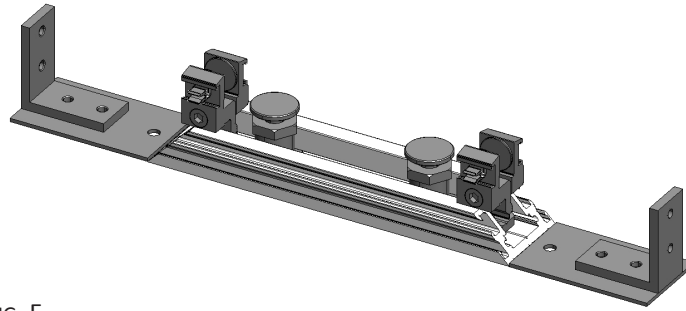
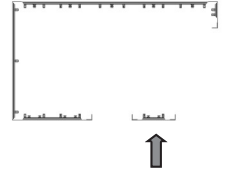
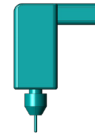
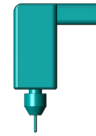
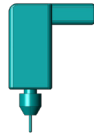


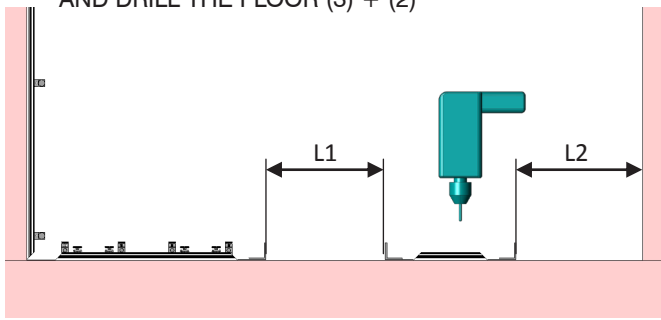
FIG. E



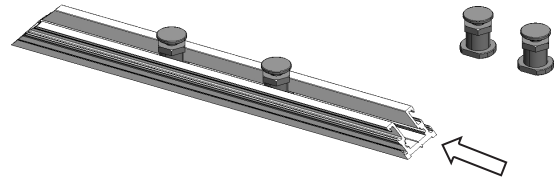
**1. PRE-DRILL THE PROFILE (3 HOLES)**



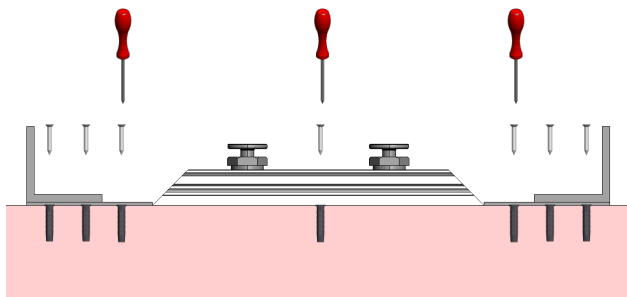
**2. CHECK THE DIMENSIONS (L1/L2) AND DRILL THE FLOOR (3) + (2)**



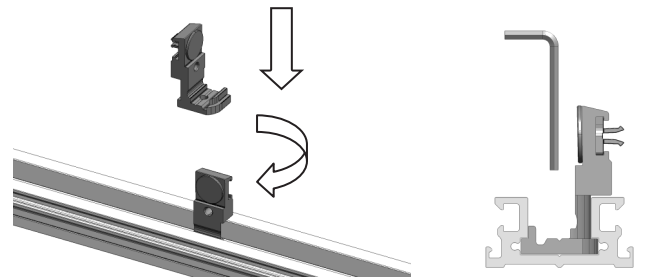
**3. INSERT THE PANE SUPPORTS (2 PER PANE)**



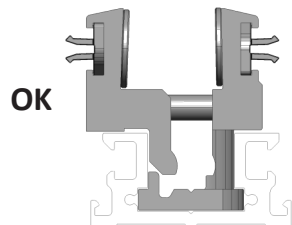
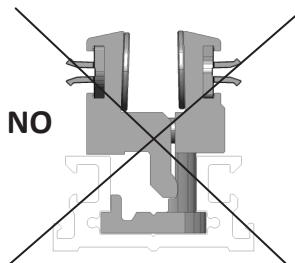
**4. FIX THE PROFILE AND PLATES TO THE FLOOR**



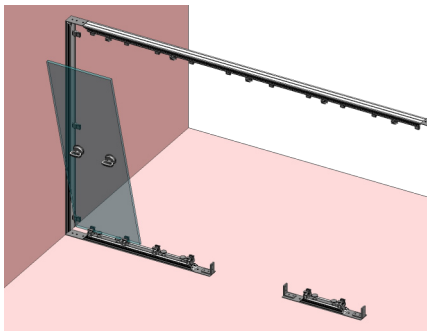
**5. INSERT THE CLAMPS WITHOUT THE COVERS (2X PANE) AS SHOWN IN FIG. E AND TIGHTEN THE SCREW PARTIALLY TO ALLOW THE CLAMP TO OSCILLATE**



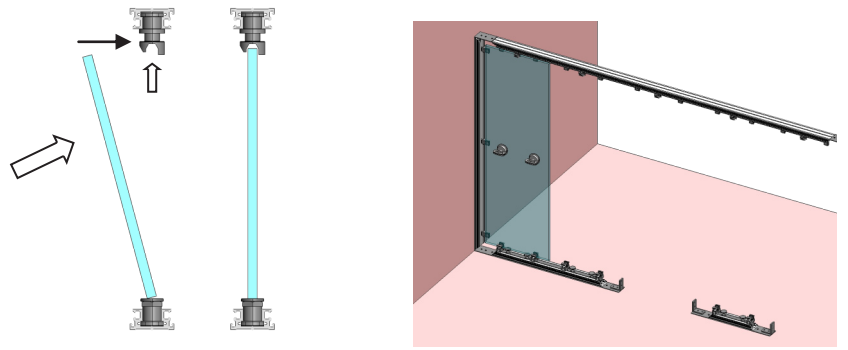
**6. MOUNT THE COVERS AND CHECK THEY ARE OPEN**



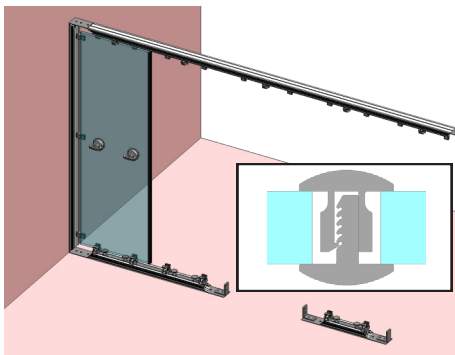
**1. POSITION 1ST PANE**



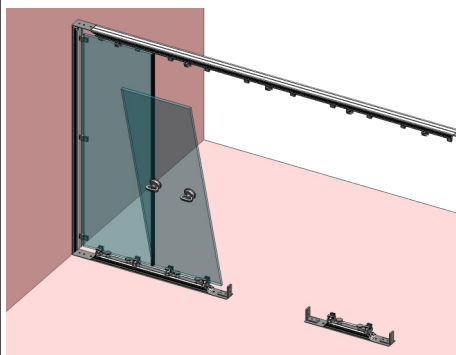
**2. FIT THE PANE INTO THE SUPPORTS AND CHECK LEVEL (FIG.8)**



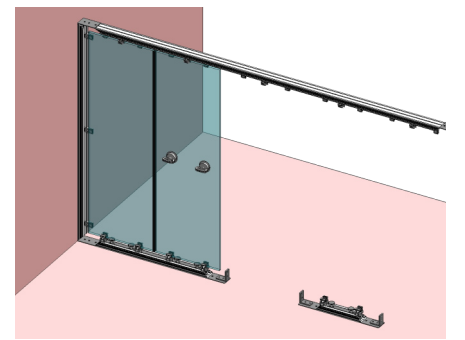
**3. FIT ALUMINIUM OR POLYCARBONATE H-PROFILE**



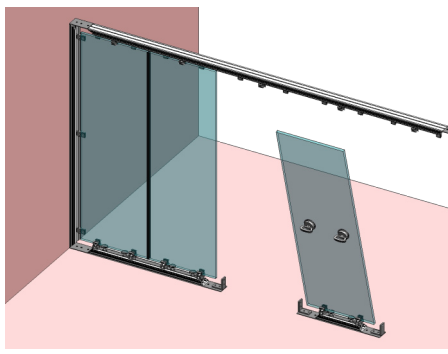
**4. POSITION 2ND PANE**



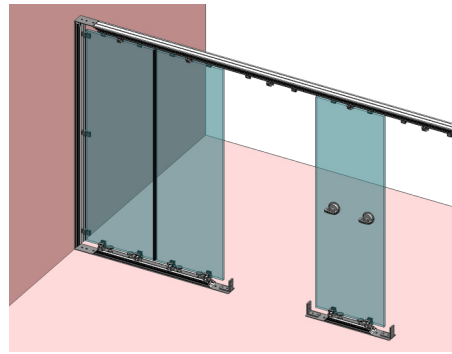
**5. FIT THE PANE INTO THE SUPPORTS AND CHECK LEVEL (FIG. 8)**



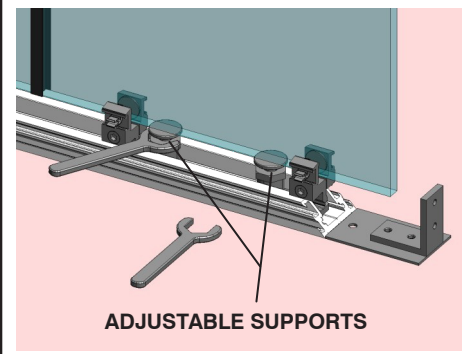
**6. POSITION 3RD PANE**



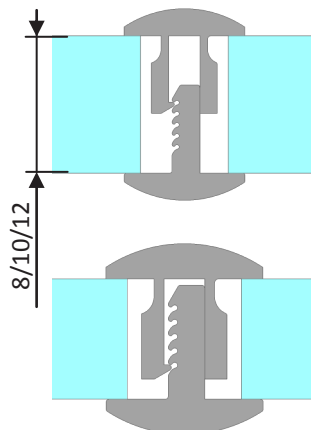
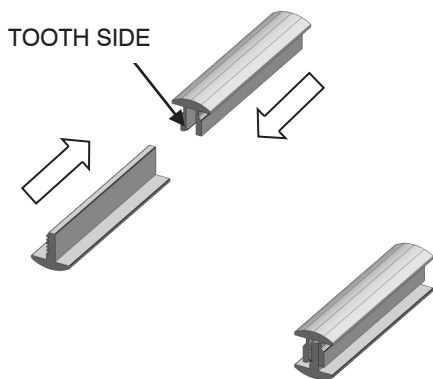
**7. FIT THE PANE INTO THE SUPPORTS AND CHECK LEVEL (FIG. 8)**



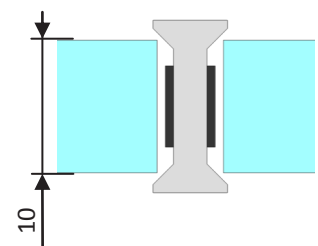
**8. PANE LEVELLING**



**SAMPLE ASSEMBLY OF ALUMINIUM H-PROFILE PRE-MOUNT TO GET THE DESIRED PANE SHIM**



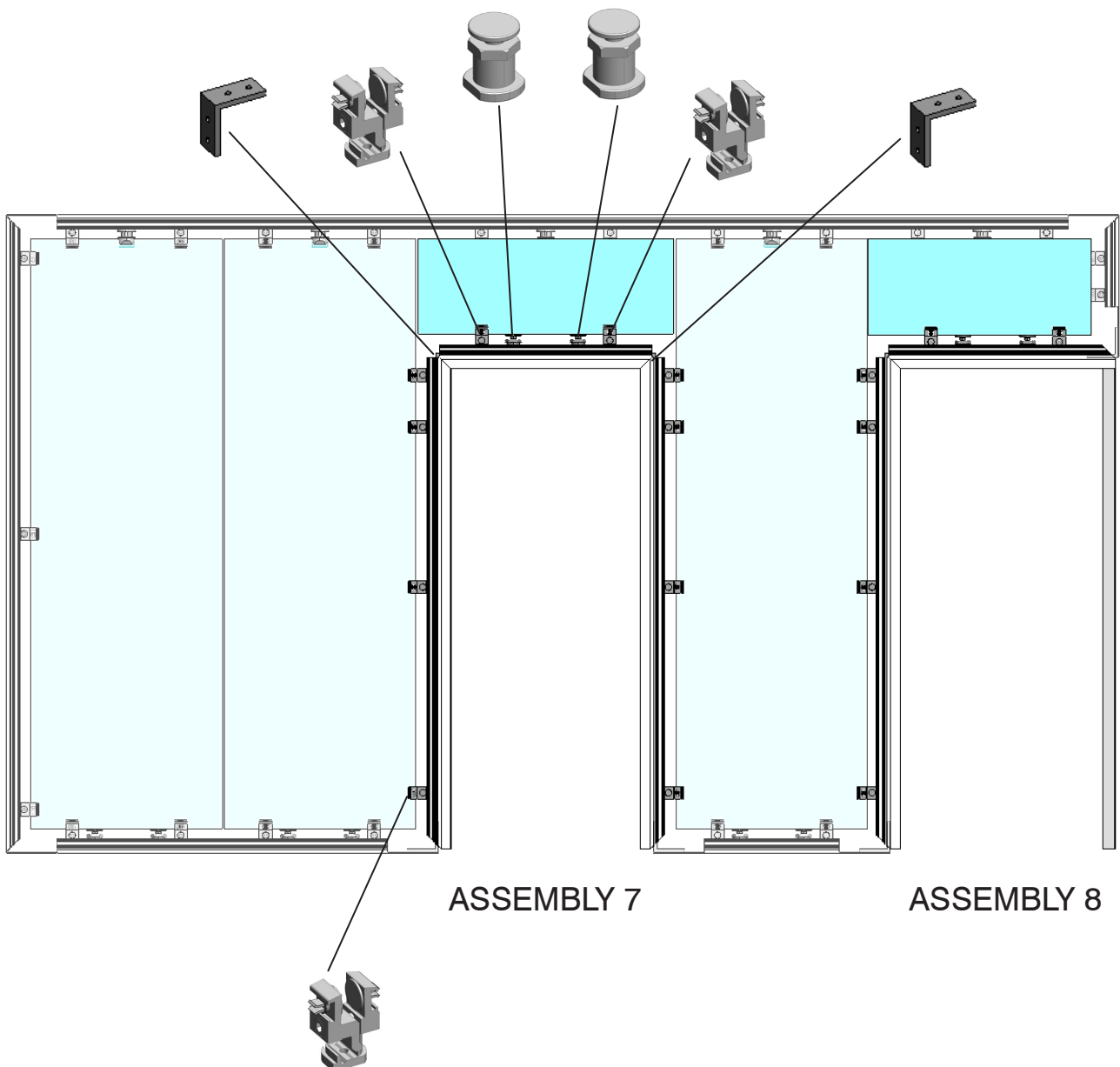
**SAMPLE ASSEMBLY OF POLYCARBONATE H-PROFILE**



# SHEET 2

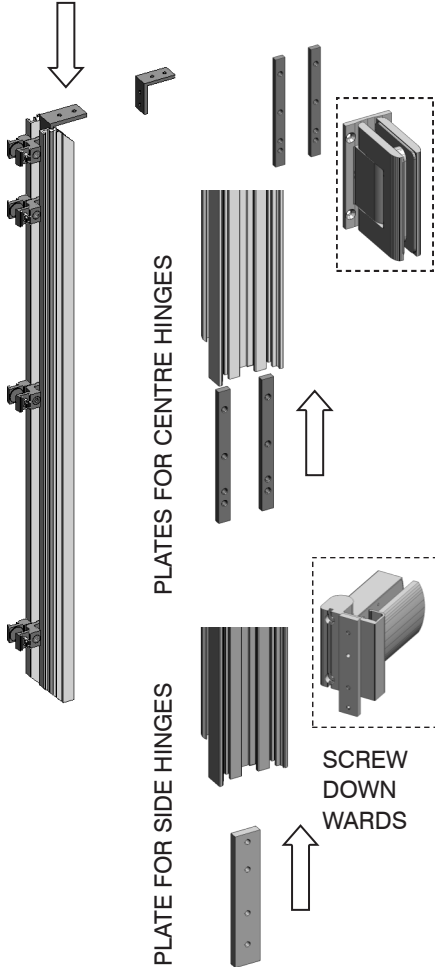
## ASSEMBLY INSTRUCTIONS FOR DOOR FRAMES AND FANLIGHTS/TRANSOMS

OVERALL DIAGRAM OF THE BASIC STRUCTURE WITHOUT COVER STRIPS

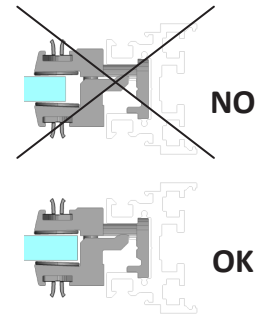
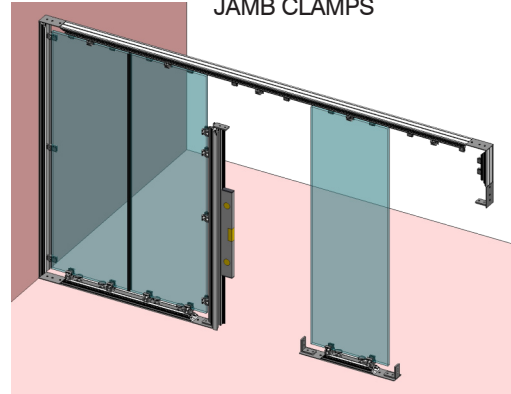


**1. PREPARE THE JAMB ON HINGE SIDE**

- A. MOUNT CLAMPS WITH COVERS OPEN AS SHOWN**
- B. MOUNT BRACKET WITHOUT TIGHTENING SCREWS**
- C. INSERT PLATES (2 PER CENTRE HINGE) (1 PER SIDE HINGE ) IN JAMB ON HINGE SIDE**
- PLATE FOR SIDE HINGES**
- PLATE FOR CENTRE HINGES**
- SCREW DOWNWARDS**

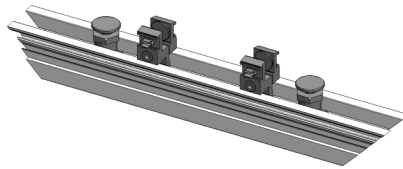


**2. MOUNT THE PROFILE AND CHECK LEVEL. POSITION PANES AND CLOSE JAMB CLAMPS**



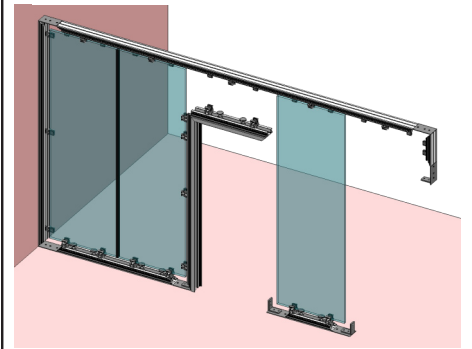
**N.B. POSITION PANES AS SHOWN**

**3. PREPARE FANLIGHT / TRANSOM FRAME**



INSERT PANE SUPPORT AND CLAMPS WITH COVERS OPEN (2 PER PANE) AS SHOWN

**4. MOUNT FANLIGHT / TRANSOM FRAME**

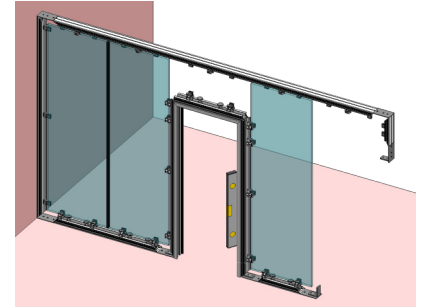


**5. PREPARE JAMB OPPOSITE HINGE SIDE**



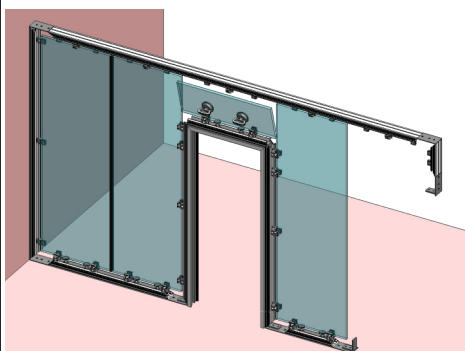
SEE 1.A AND 1.B

**6. MOUNT JAMB OPPOSITE HINGE SIDE, AND POSITION PANES, LEAVING SPACE FOR THE FANLIGHT / TRANSOM**

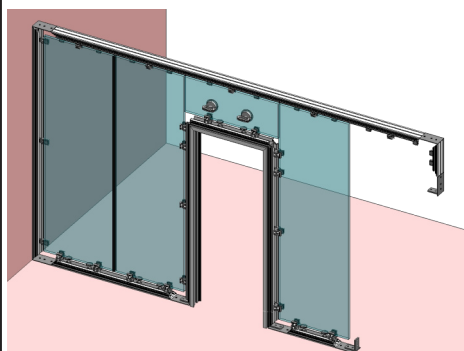


**ASSEMBLY INSTRUCTIONS FOR FANLIGHT / TRANSOM**

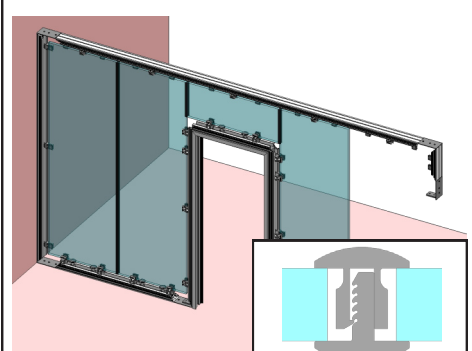
**1. POSITION FANLIGHT / TRANSOM PANE**



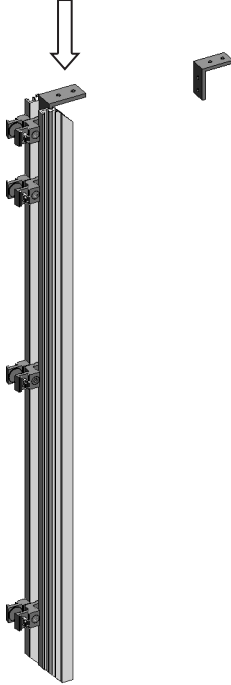
**2. INSERT PANE IN SUPPORTS AND LEVEL**



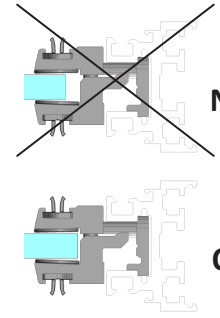
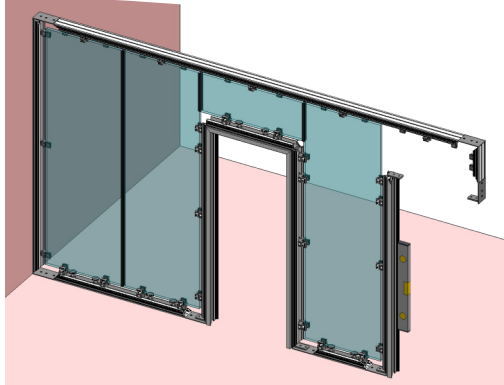
**3. INSERT H-SECTIONS AND CLOSE CLAMPS**



**1. PREPARE UPRIGHT OPPOSITE HINGE SIDE**  
 MOUNT CLAMPS WITH COVERS OPEN  
 AS SHOWN  
 MOUNT BRACKETS WITHOUT  
 TIGHTENING SCREWS

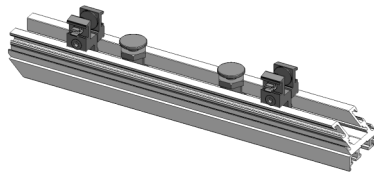


**2. MOUNT THE PROFILE AND CHECK LEVEL. POSITION PANES AND CLOSE CLAMPS**



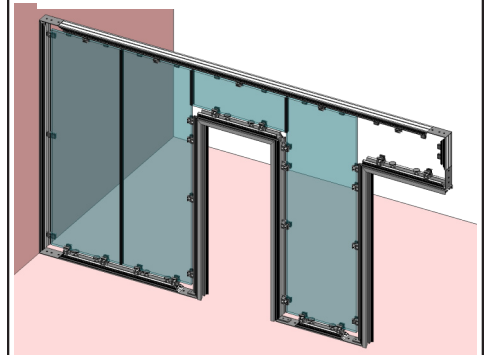
**N.B. POSITION PANES AS SHOWN**

**3. PREPARE FANLIGHT / TRANSOM FRAME**



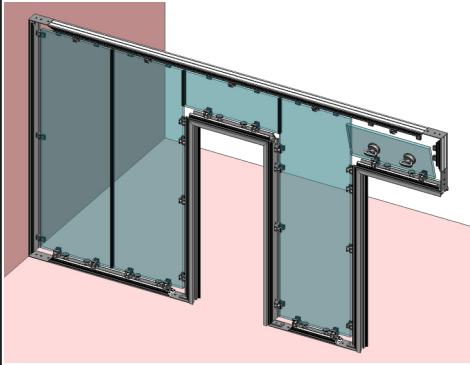
INSERT PANE SUPPORT AND CLAMPS  
 WITH COVERS OPEN  
 (2 PER PANE) AS SHOWN

**4. MOUNT FANLIGHT / TRANSOM FRAME**

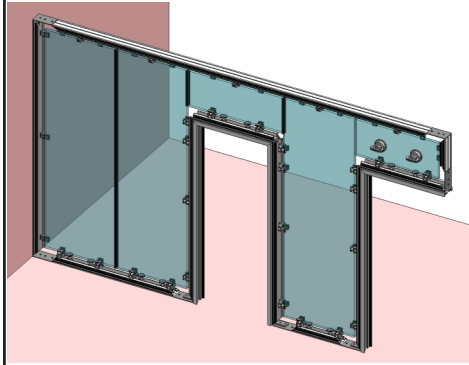


**ASSEMBLY INSTRUCTIONS FOR FANLIGHT / TRANSOM**

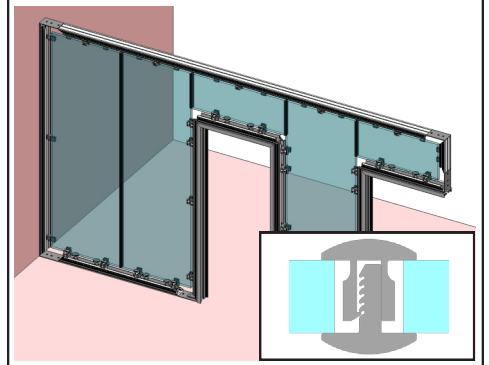
**1. POSITION FANLIGHT / TRANSOM PANE**



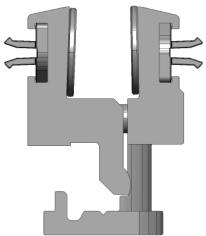
**2. INSERT PANE IN SUPPORTS AND LEVEL**



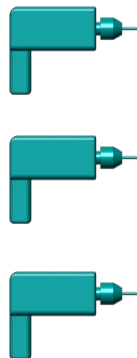
**3. INSERT H-SECTION**



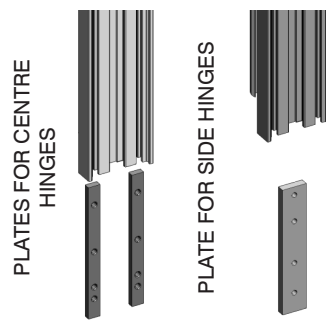
**1. NOW TIGHTEN ALL THE CLAMPS**



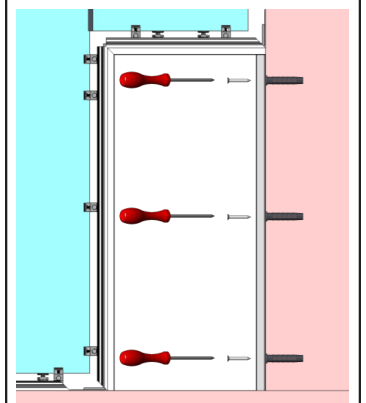
**2. PRE-DRILL THE PRPROFILE(3x)**



**3. INSERT PLATES  
 (2 PER CENTRE HINGE)  
 (1 PER SIDE HINGE )  
 IN JAMB ON HINGE SIDE**

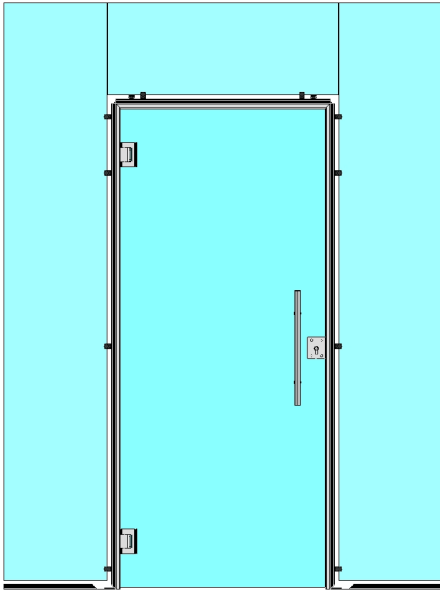


**4. FIX ONTO THE WALL**

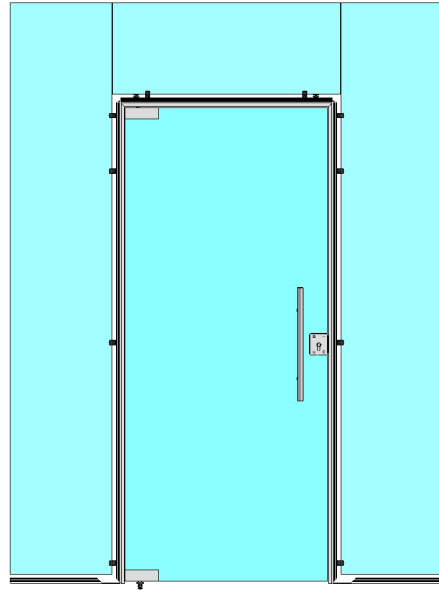


# SHEET 3

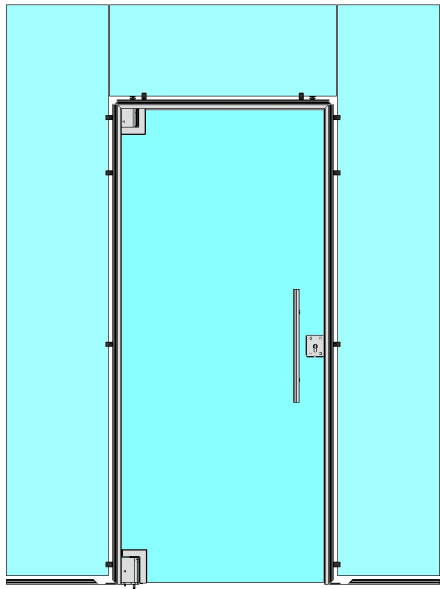
## ASSEMBLY INSTRUCTIONS FOR DOORS



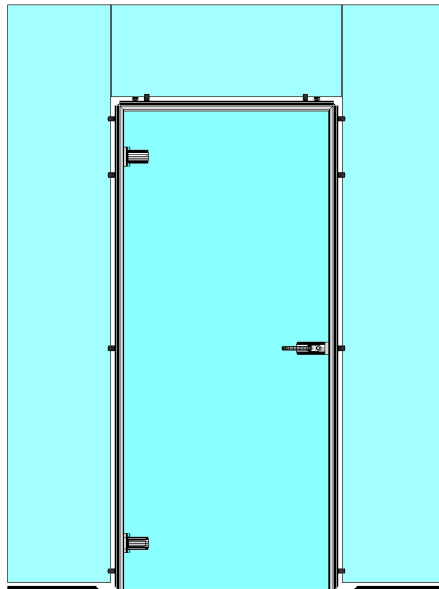
**8066**  
PUSH/PULL HYDRAULIC HINGE



**MAX series**  
HINGE FOR PUSH/PULL BOTTOM  
PIVOT OR FLOOR SPRING

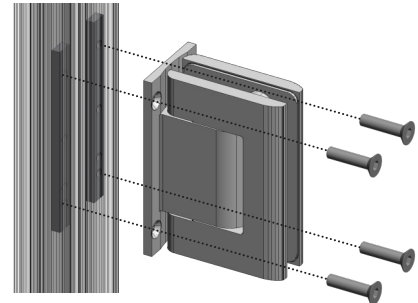
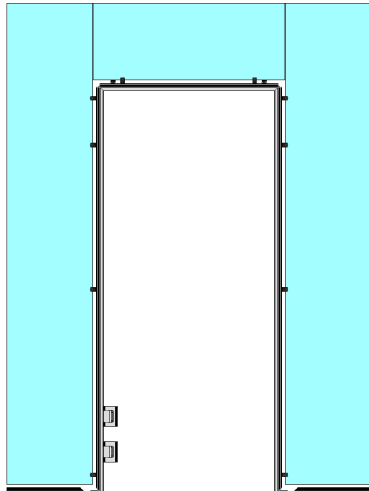


**TRILOBA**  
PUSH/PULL FLOOR SPRING  
HINGE



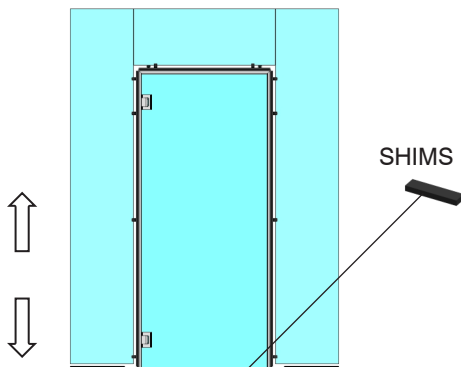
**8061**  
SIDE HYDRAULIC HINGE FOR REBATE  
DOORS  
**8816 - 8826**  
SIDE HINGES  
REBATE DOORS

1. FIT THE HINGES ONTO THE PROFILE (USING THE MOUNTED PLATES). DO NOT TIGHTEN THE SCREWS TO ALLOW THE HINGES TO SLIDE

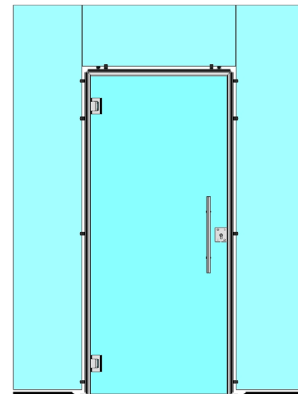


SECURING SCREWS

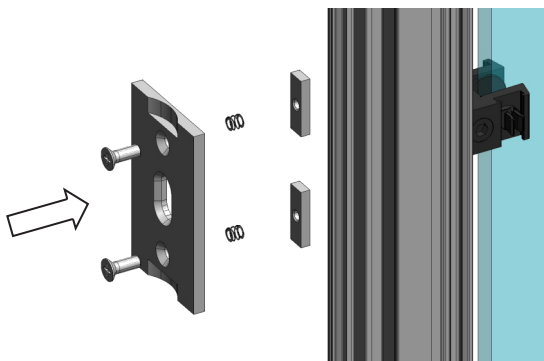
2. POSITION THE PANE AND SHIMS, ADJUST HINGE HEIGHT AND TIGHTEN THE SECURING SCREWS



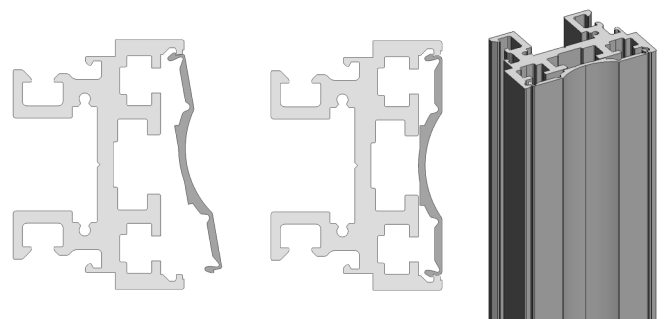
3. MOUNT THE DOOR



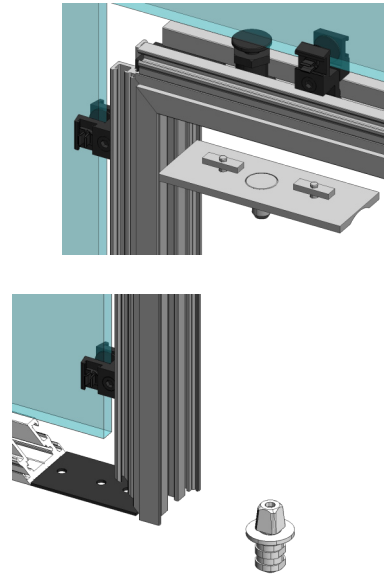
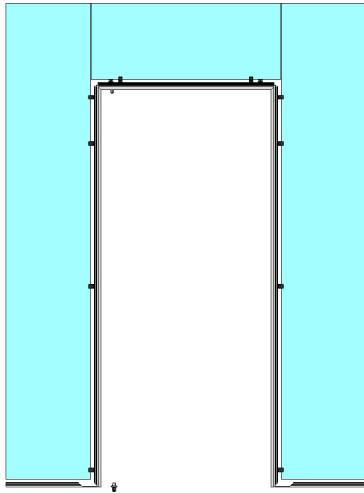
4. WHERE REQUIRED, MOUNT THE LOCK ACCESSORY ON THE DOOR JAMB



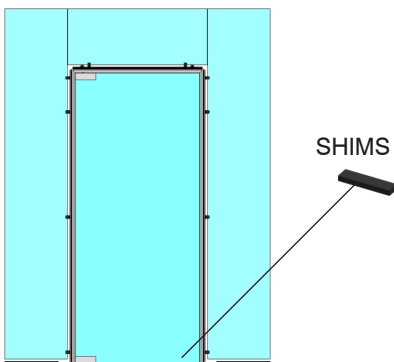
5. CUT THE SNAP-ON PROFILE TO SIZE AND APPLY



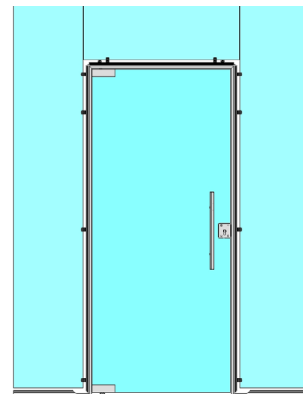
1. MOUNT THE TOP PIVOT ON THE PROFILE AND INSERT THE BOTTOM PIVOT OR THE FLOOR SPRING IN THE FLOOR



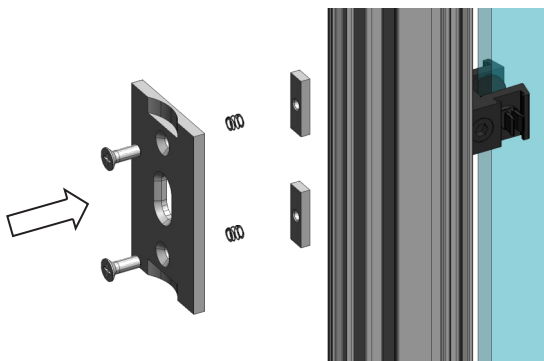
2. POSITION THE PANE AND SHIMS AND MOUNT THE HINGES



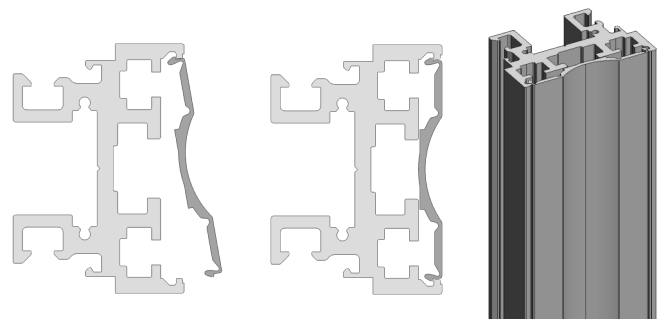
3. MOUNT THE DOOR



4. WHERE REQUIRED, MOUNT THE LOCK ACCESSORY ON THE DOOR JAMB

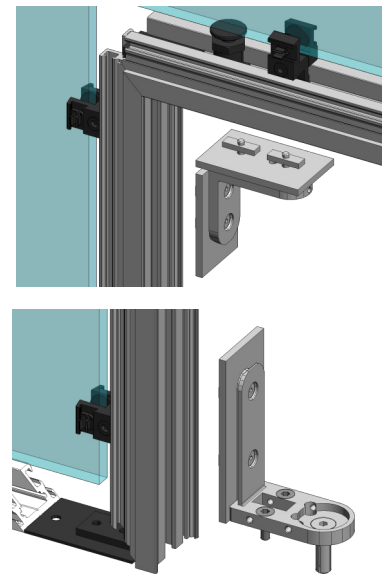
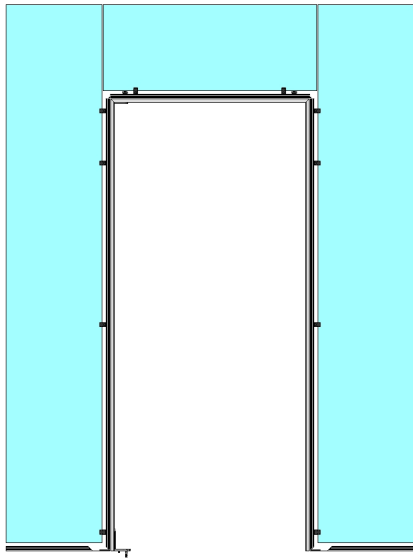


5. CUT THE SNAP-ON PROFILE TO SIZE AND APPLY

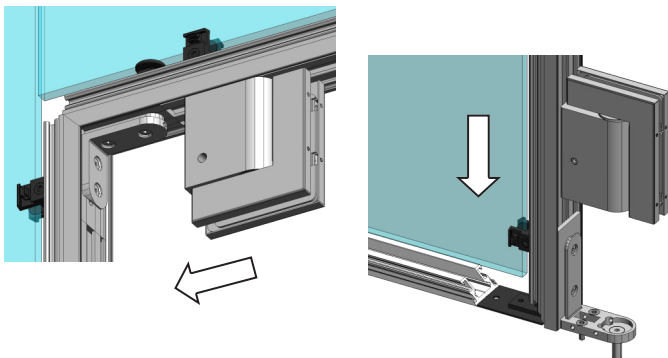




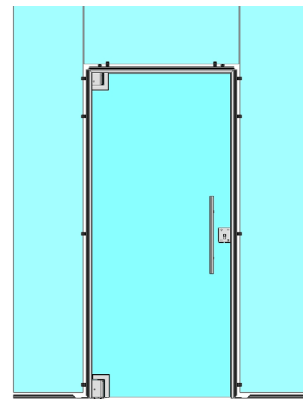
11. MOUNT THE UPPER BRACKET ON THE PROFILE AND THE LOWER BRACKET ON THE PROFILE AND FLOOR



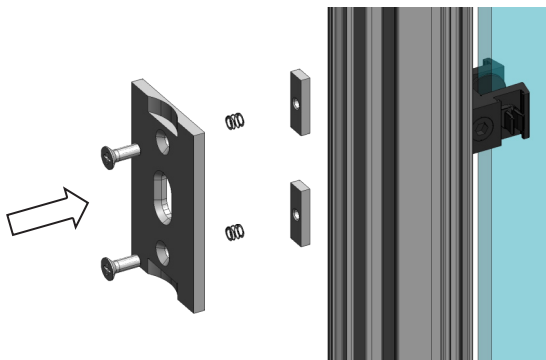
2. FIT THE UPPER AND LOWER HINGES IN THE BRACKETS



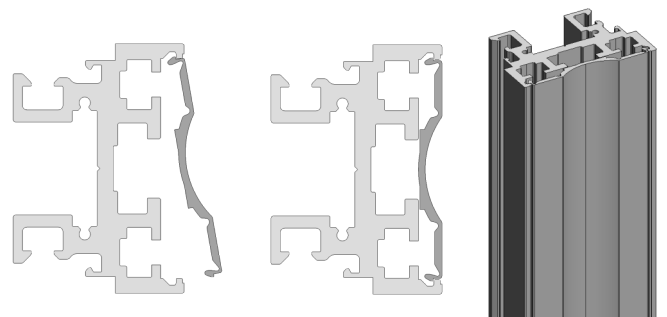
3. MOUNT THE DOOR



4. WHERE REQUIRED, MOUNT THE LOCK ACCESSORY ON THE DOOR JAMB



5. CUT THE SNAP-ON PROFILE TO SIZE AND APPLY



# REBATE DOORS BILOBA 8061 - 8816 - 8826

## SHEET 3

1. MOUNT THE HINGES ON THE SECTION, USING THE MOUNTED PLATE. DO NOT TIGHTEN THE SCREWS AND THE GRUB SCREW TO ALLOW THE HINGES TO SLIDE

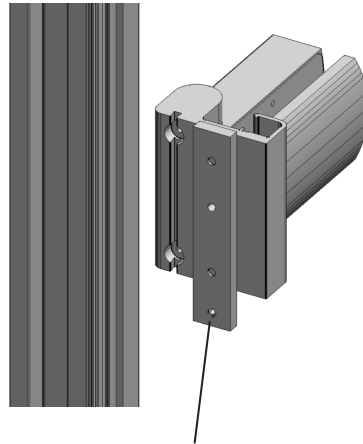
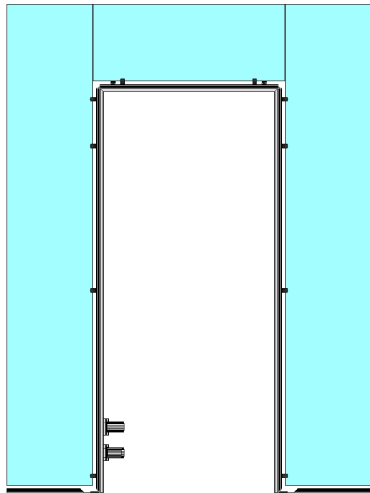
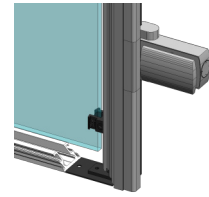
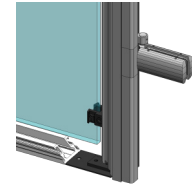


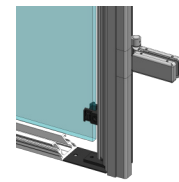
PLATE MOUNTED ON THE DOOR JAMB



8061

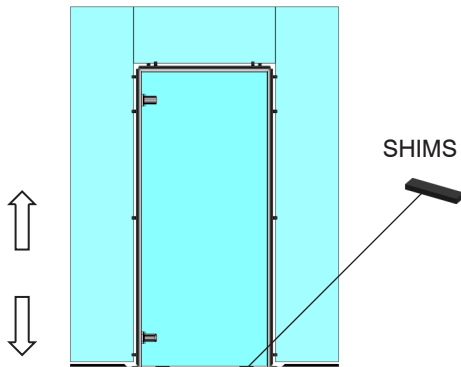


8816

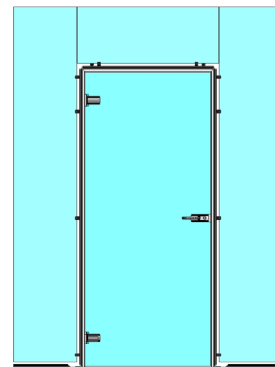


8826

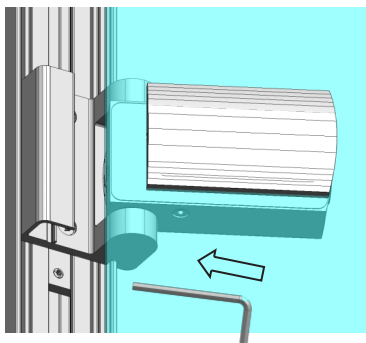
2. POSITION THE PANE AND SHIMS, ADJUST HINGE HEIGHT AND TIGHTEN THE SECURING SCREWS



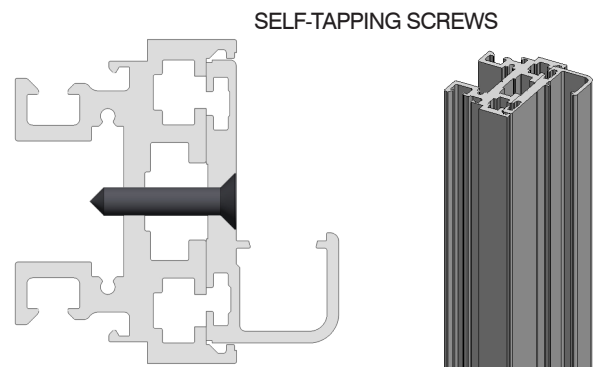
3. MOUNT THE DOOR



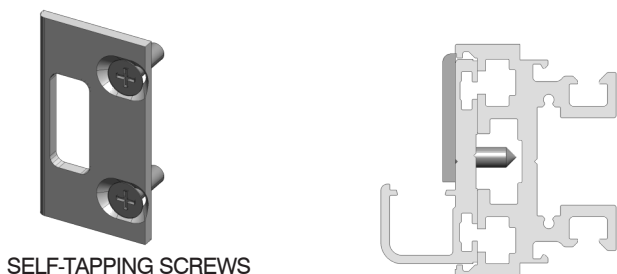
4. TIGHTEN THE GRUB SCREW AFTER MOUNTING THE DOOR



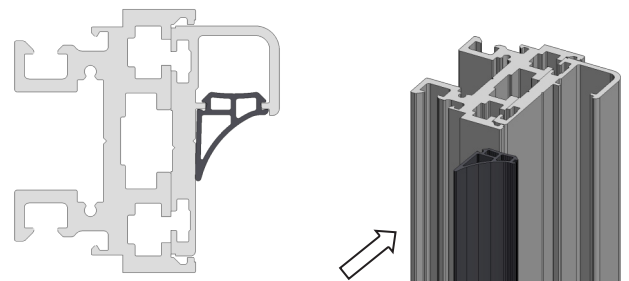
5. CUT THE REBATE PROFILE TO SIZE AND MOUNT



6. MOUNT THE LOCK ACCESSORIES ON THE REBATE PROFILE



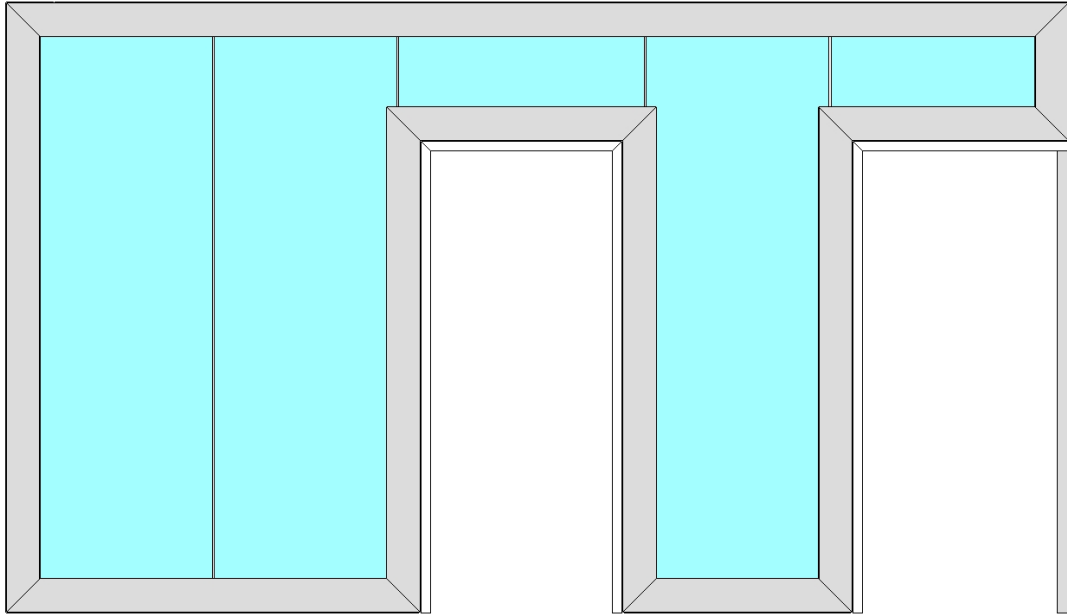
7. MOUNT THE SEAL ON THE REBATE PROFILE



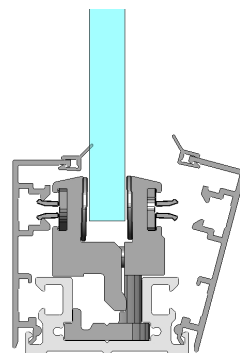
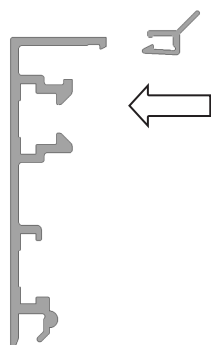
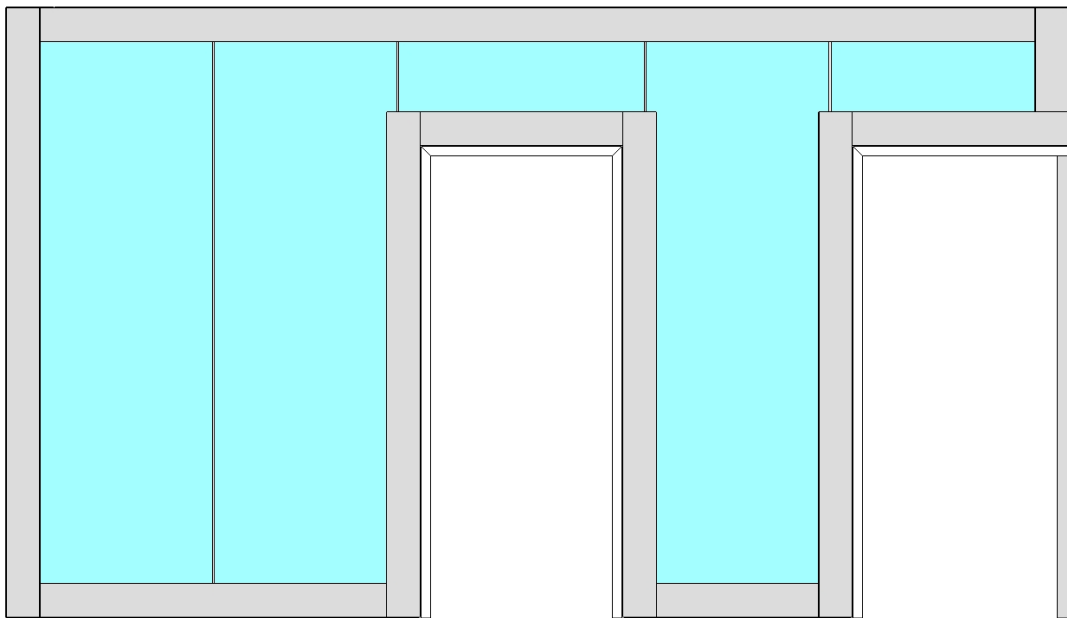
# SHEET 4

## ASSEMBLY INSTRUCTIONS FOR COVER STRIPS

### 45° CUTS



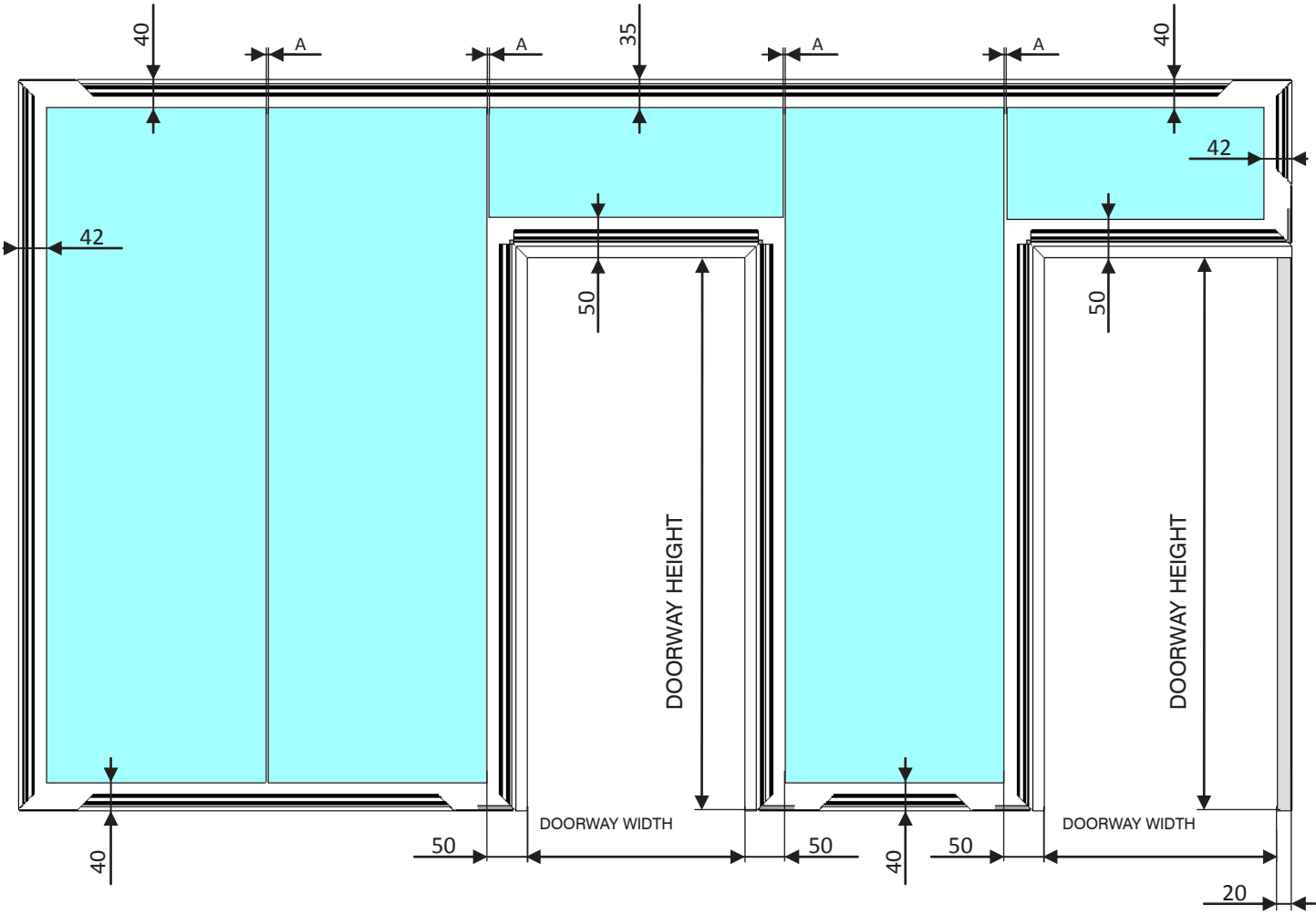
### STRAIGHT CUTS



# SHEET 5

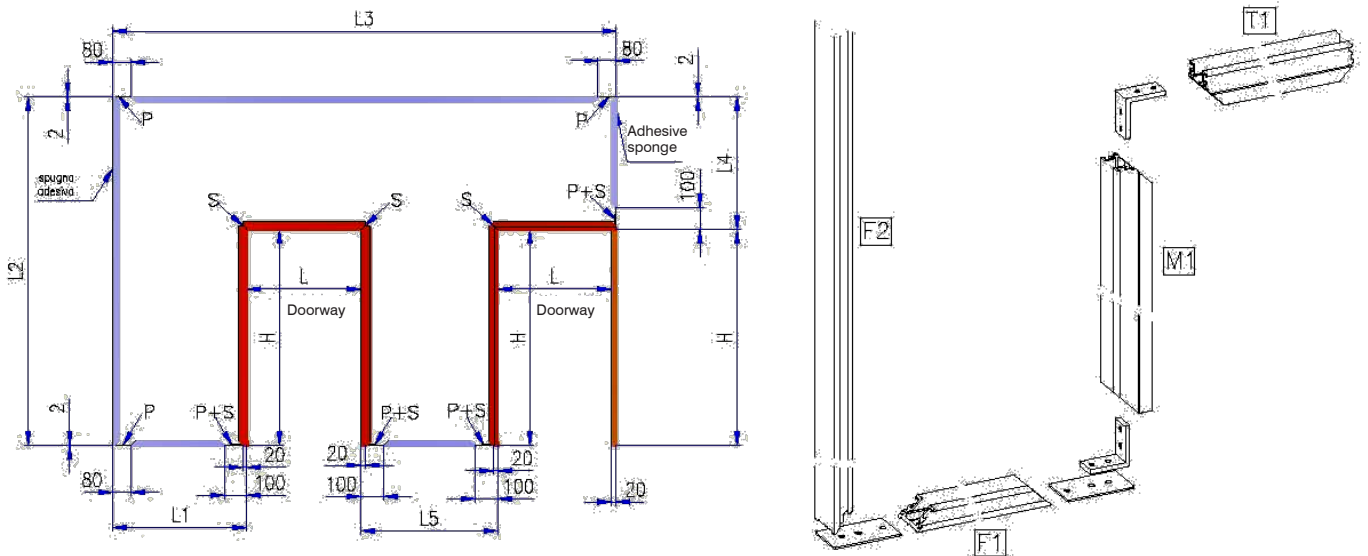
## PANE SIZING DIAGRAM

A= 3mm	FOR POLYCARBONATE H-PROFILE	FOR 10 mm PANE
A= 6mm	FOR ALUMINIUM H-PROFILE	FOR 8/10/12 mm PANES



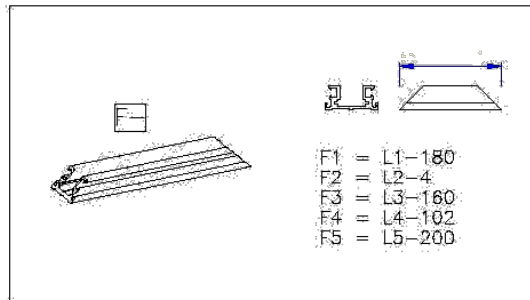
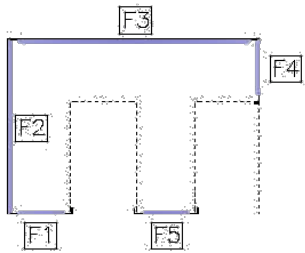
# SHEET 6

## CUTTING DOOR FRAME BASIC PROFILES TO SIZE SNAP-ON AND REBATE PROFILE CUTTING

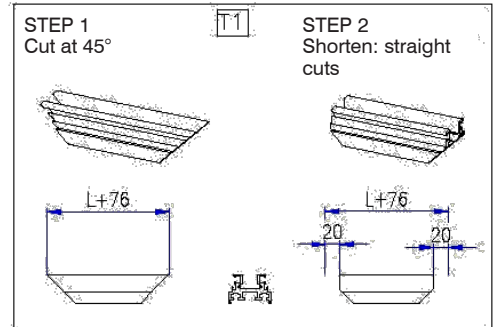
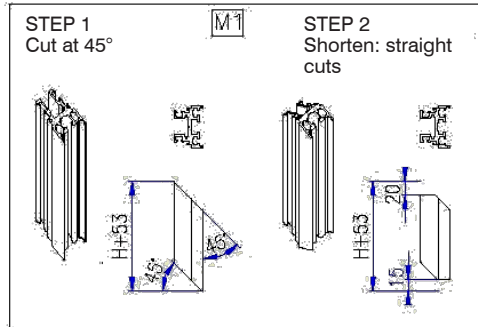
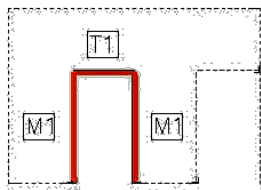


### CUTTING FORMULAE

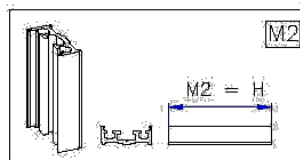
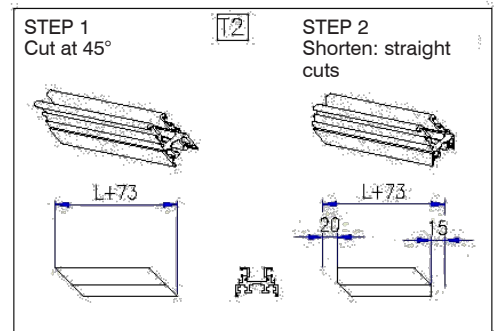
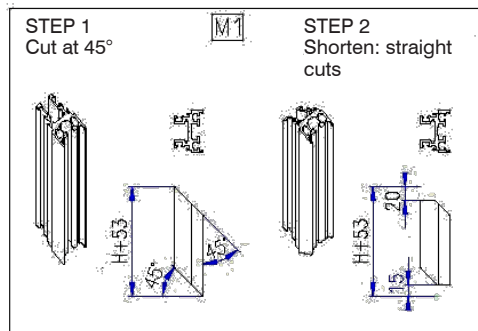
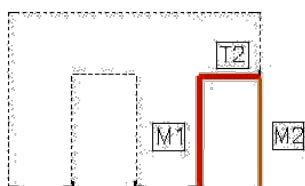
#### FIXED PROFILE



#### CENTRE DOOR FRAME



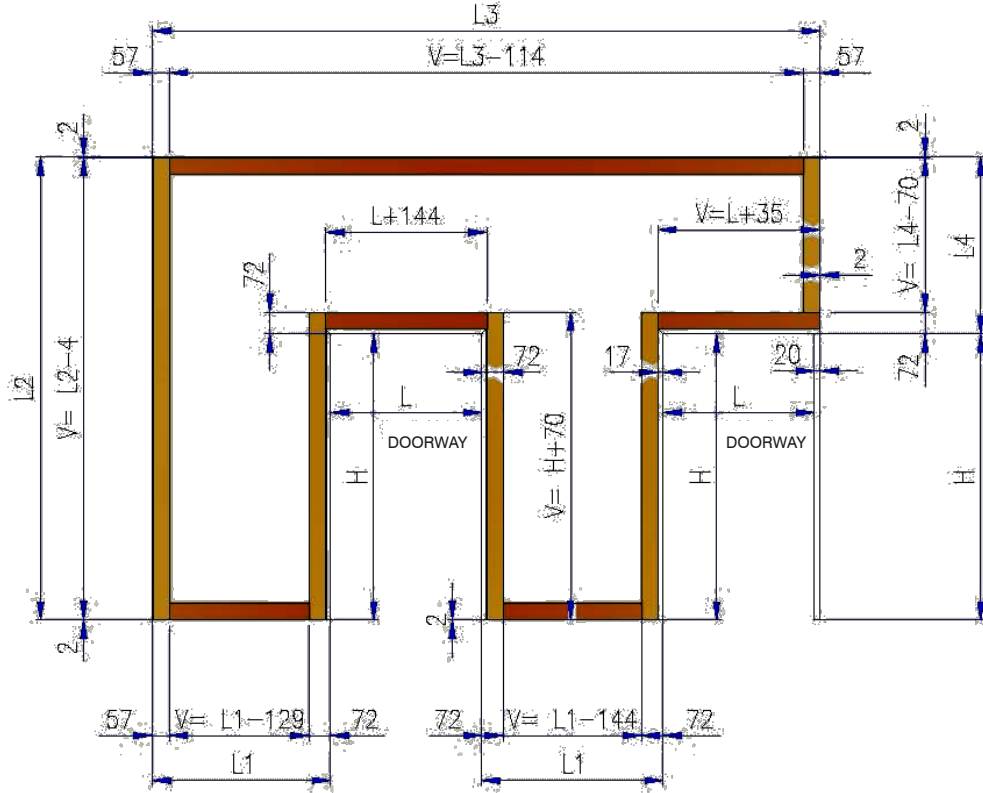
#### WALL DOOR FRAME



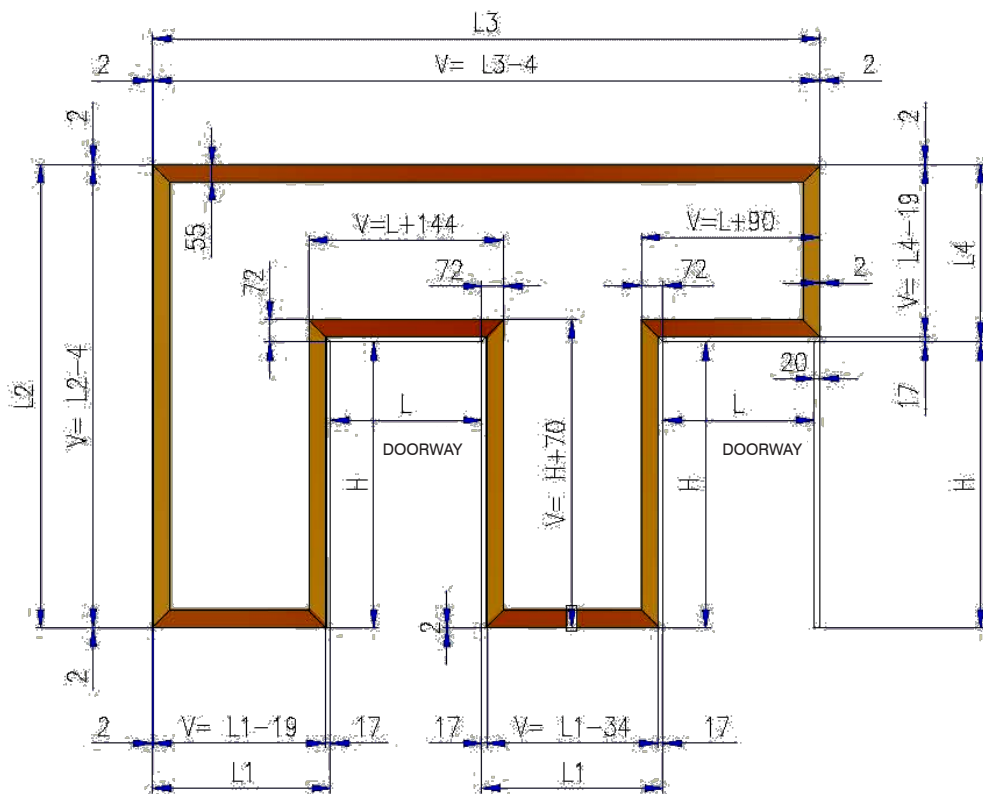
# SHEET 7

## CUTTING COVER STRIPS TO SIZE

### INDICATIVE DIMENSIONS – STRAIGHT CUTS CUT OPTIMISATION ON ASSEMBLY



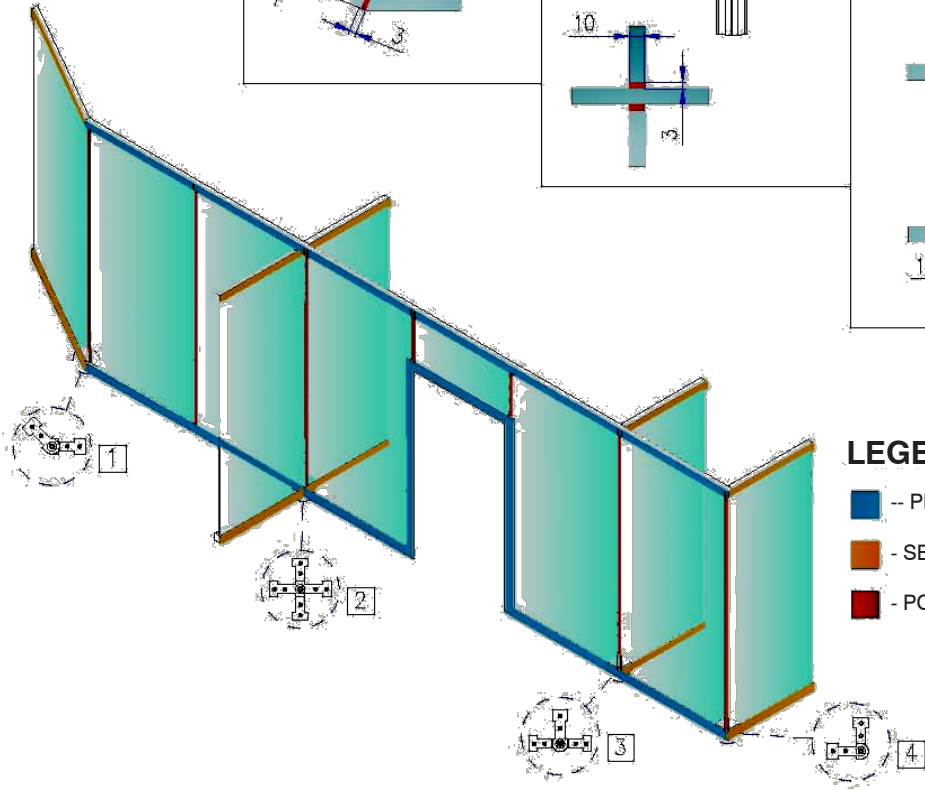
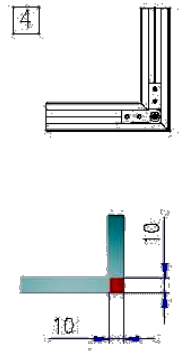
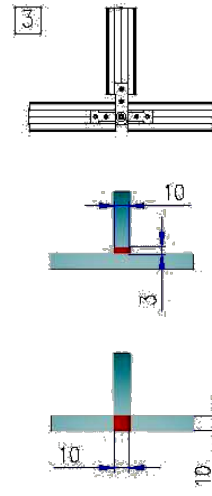
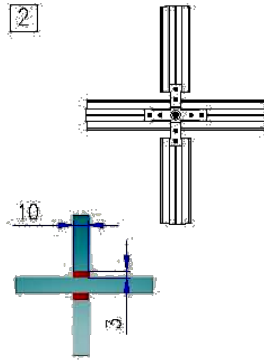
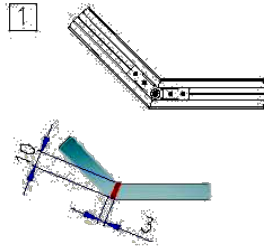
### INDICATIVE DIMENSIONS – 45° CUTS CUT OPTIMISATION ON ASSEMBLY



# SHEET 8

## 45° AND 90° ANGLES

POSSIBLE SOLUTIONS  
PANES WITH POLYCARBONATE PROFILES

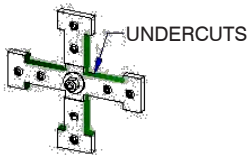


### LEGEND

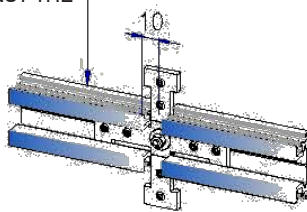
- -- PRIMARY FACADE PROFILES
- - SECONDARY FACADE PROFILES
- - POLYCARBONATE PROFILE (10mm panes only)

### EXAMPLE OF INSTALLATION

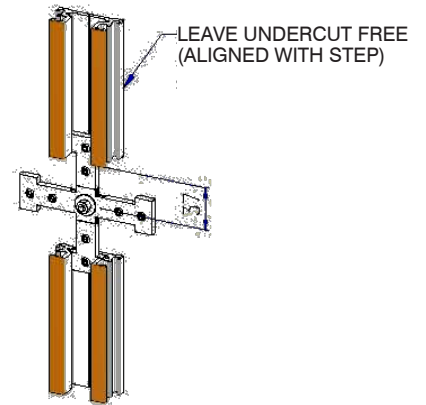
POSITION UP AGAINST THE BRACKET



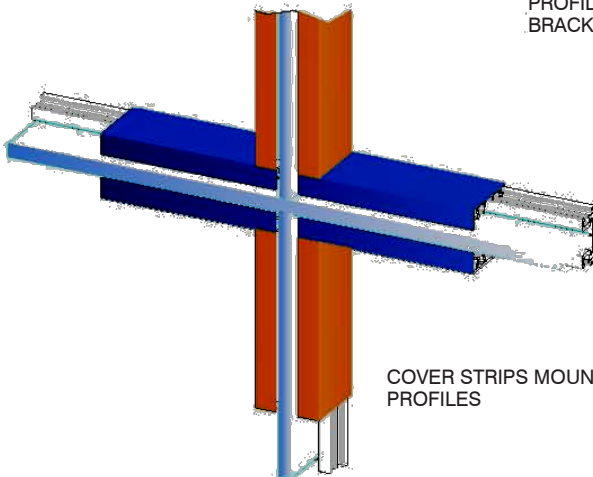
BRACKET



POSITION OF PRIMARY FACADE PROFILE WITH RESPECT TO BRACKET



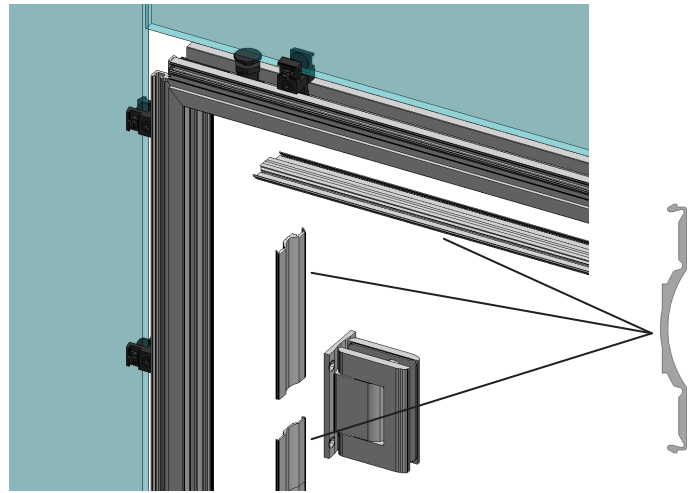
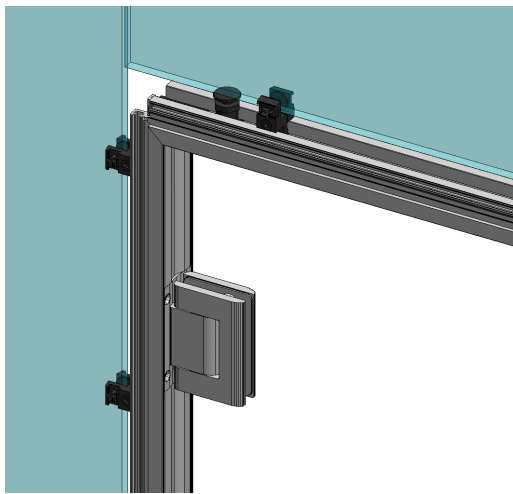
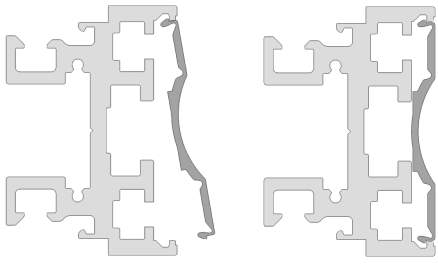
POSITION OF SECONDARY FACADE PROFILE WITH RESPECT TO BRACKET



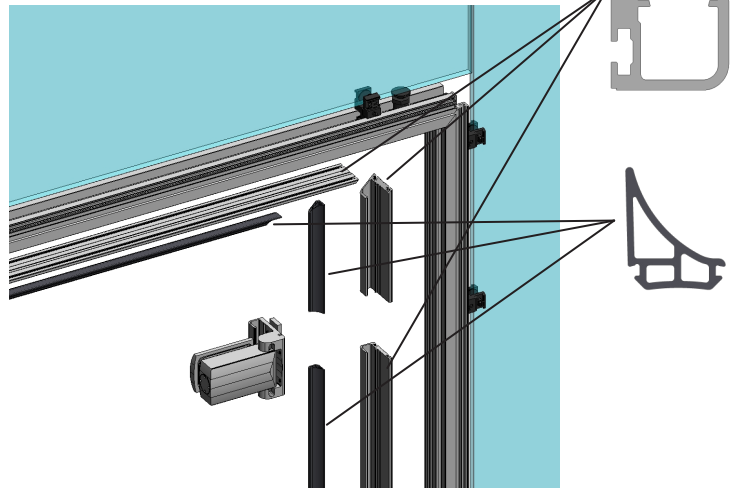
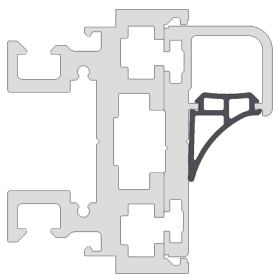
COVER STRIPS MOUNTED ON PROFILES

# SHEET 9

## SNAP-ON PROFILE



## REBATE PROFILE





# SHEET 10

## SWITCH APPLICATIONS



### TECHNICAL DATA:

VIMAR 16001 SWITCH

VIMAR 16783.01 SINGLE COVER PLATE

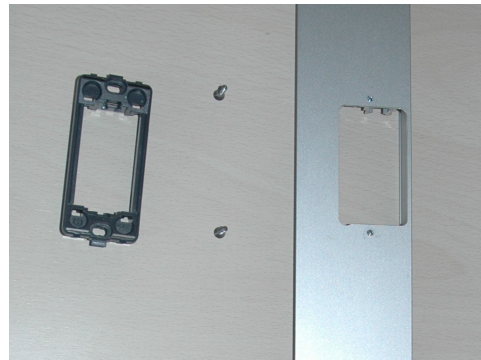
VIMAR16784.01 DOUBLE COVER PLATE

VIMAR 16771 FRAME FOR SINGLE COVER PLATE

VIMAR 16772 FRAME FOR DOUBLE COVER PLATE

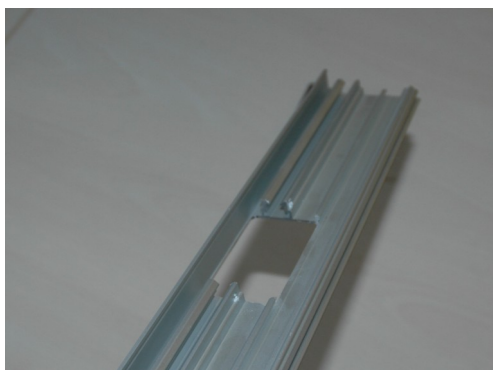


### DETAIL OF CABLE RUNWAY

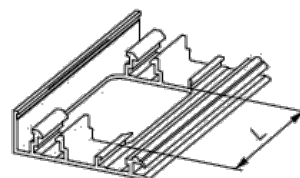


### ASSEMBLY INSTRUCTIONS:

1. CUT A SLOT IN THE COVER STRIP (SEE CLOSE-UP)
2. MOUNT THE FRAME, SWITCH AND COVER PLATE



### SLOT DIMENSION



L=57 mm FOR 1-MODULE FRAME  
L=112 mm FOR 2-MODULE FRAME

